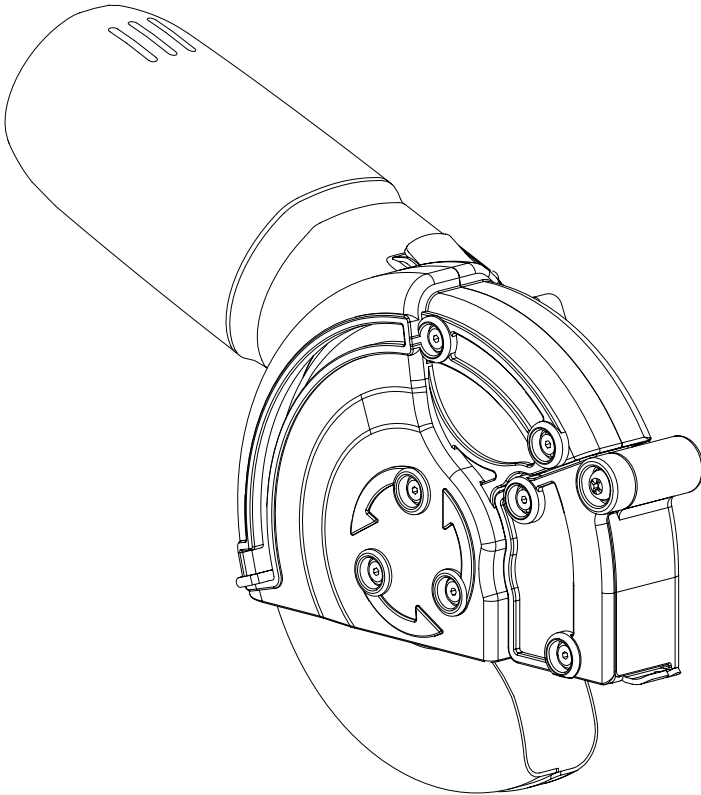


Alpha[®] Ecoguard Type M Spark Protection Cover Instruction Manual



(*Shown with angle grinder / sold separately)

Part No: ECOGRDSB
Version 1

 **Alpha Professional Tools**[®]

103 Bauer Drive, Oakland, NJ 07436 • 800-648-7229 • Fax: 800-286-0114
www.alpha-tools.com

TABLE OF CONTENTS


Introduction	3
About The Symbols	3
Precautions For Using Spark Protection Cover	3
Ecoguard Type M Overview	4
Specifications	4
Accessories	5
Components	5
Attachable Grinders	6
Ecoguard Type M Spacers And Connectors	7
Installation Of The Spark Protection Cover	8
Installing To Alpha® Or Makita® Variable-Speed Angle Grinder	8
Replacement of the Side Protectors A and B	9
Installing The Connector	10
Installation Of Blade	11
Cutting Application	13
Alpha® Ecoguard Type M Parts List	14
Alpha® Ecoguard Type M Schematic	15


INTRODUCTION


Thank you for purchasing the Alpha® Ecoguard Type M aka Spark Buster. To ensure correct use, read this Instruction Manual and the Instruction Manual for the power tool and follow the operating instructions. Keep this manual in a place where operators can access it easily whenever necessary!

► ABOUT THE SYMBOLS

According to the hazard level, all safety notes in this manual are classified into “DANGER”, “WARNING”, and “CAUTION”.

 **DANGER!** Death or serious personal injury is imminent when handling this polisher incorrectly.

 **WARNING!** There is a possibility of death or serious personal injury when handling this polisher incorrectly.

 **CAUTION!** There is a possibility of personal injury or property damage when handling this polisher incorrectly.

Note: In some situations, failing to observe WARNING notes could result in death or serious personal injury. Be sure to read and observe the safety notes to ensure safety and correct use of the polisher.

► PRECAUTIONS FOR USING SPARK PROTECTION COVER

1. The Spark Protection Cover is for use with a 4.5” (115mm), 5” (125mm) or 6” (150mm) variable-speed angle grinder.
2. The Spark Protection Cover is designed for metal cutting of ferrous materials such as metal studs, pipe, cast iron and angle iron.
3. Be sure to wear protective goggles, dust mask, protective footwear, earplugs and other protective equipment when working.
4. Confirm that Blade does not touch inside of the Spark Protection Cover.
5. Keep Spark Protection Cover away from gasoline, thinner, petroleum and paraffin.
6. Always check the Spark Protection Cover for damage, cracks or deformation before starting work. Do not use the Spark Collection Cover if it is damaged, cracked or bent as this could cause to injury.
7. The capacity of max. rotating speed of the blade must be higher than that of the Grinder.
8. The supplied connector may not connect securely to every variable-speed angle grinder. In this case, do not use the Spark Protection Cover.

ECOGUARD TYPE M OVERVIEW

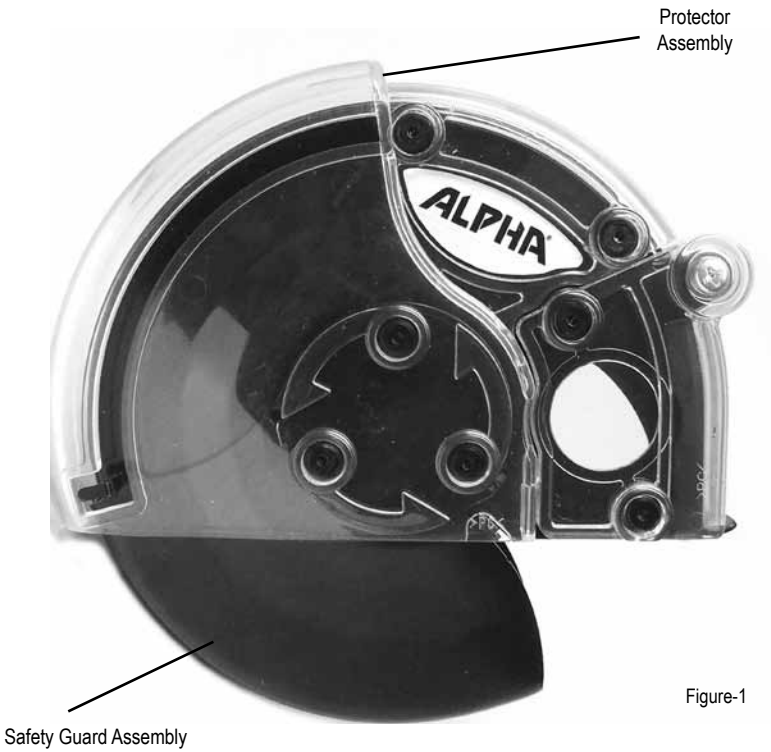


Figure-1

► SPECIFICATIONS

Model Code.....	ECOGRDSB
Attachable Blade.....	7/8" (22.23mm) Tipped Saw Blade, Abrasive Cutting Wheel, Diamond Blades
Cutting Depth.....	1-5/16" (Do Not Cut the thick material exceeding the capacity of the Grinder)
Weight.....	1.7lbs / 780g (Main Unit)
Attachable Grinders.....	SEE CHART ON PAGE 6

ACCESSORIES

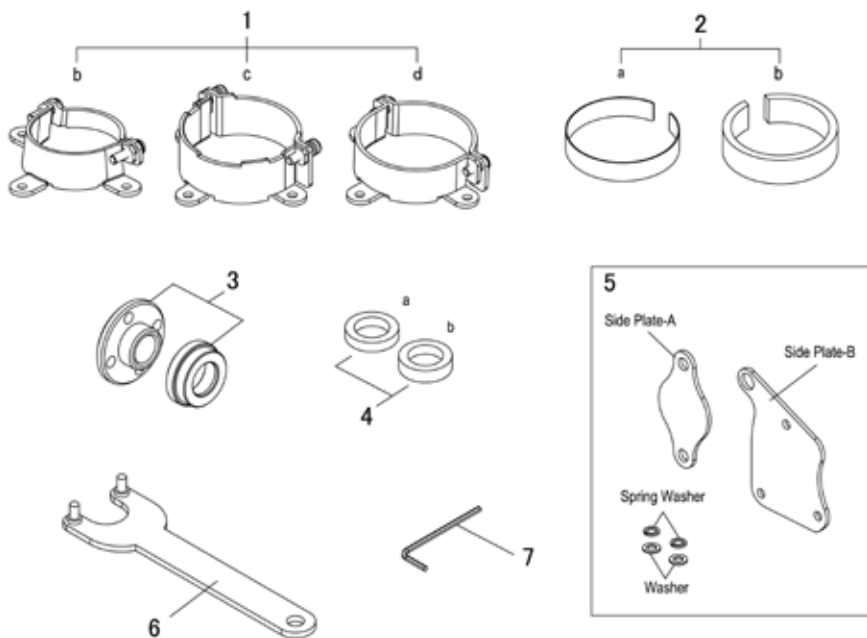


Figure-2

► COMPONENTS

- 1. Additional Connector Assembly for Most 5" Grinders 3pcs
- 2. Collar..... 2 pcs
- 3. Flange & Lock Nut Set..... 1 Set
- 4. Spacers..... 2 pcs
- 5. Side Plates & Washer Set..... 1 Set
- 6. Pin Wrench 1 pc
- 7. Hex. Wrench 1 pc

ATTACHABLE GRINDERS

GRINDER	SIZE	MODEL	GRINDER	SIZE	MODEL	GRINDER	SIZE	MODEL
ALPHA®	5"	HSG-125			1800			D28110
MAKITA	4-1/2"	GA4530	BOSCH	4-1/2"	1810PS	DEWALT	4-1/2"	D28112
		GA4534			1810PSD			D28402
		9564CV			1801			D28065
		9564PC		1803EVS	D28114			
		9557NB		1811PS	D28115			
		9557PB		1821	D28131			
	5"	GA5010Z		1821D	4-1/2" /5"		D28140	
		GA5020		1806E			D28144	
		GA5020Y		1812PSD				
		6"		9558PB	METABO		4-1/2"	6130-33
			9565CV	W8-115		6140-30		
			9565PC	W8-115 QuickProtect		6146-30		
			GA6020	W8-125 Quick		6146-31		
			GA6010Z	W11-125 Quick		6146-33		
	9566CV		WA11-125 Quick	6147-30				
	HITACHI	4-1/2"	G12SA3	5"		6147-31		
G12SE2			WE9-125 Quick			6121-30		
G12SE2P9			WE14-125 Plus			6121-31		
G12SVA			WE14-125 VS			6117-30		
G12SR3			WP8-125 QuickProtect		6117-31			
G12SS			WP11-125 QuickProtect		6117-33			
5"		G13SC2	WEPA14-125 QuickProtect		MILWAUKEE	4-1/2"	6117-33D	
		G13SC2P9	W11-150 Quick				6121-31A	
		G13SP	WE14-150 Quick				6124-30	
		G13VA	WEP14-150 QuickProtect				6124-31	
6"		WEPA14-150 QuickProtect	5"	6"			6161-30	
		WP11-150 QuickProtect					6161-31	
						6161-33		

ECOGUARD TYPE M SPACERS AND CONNECTORS

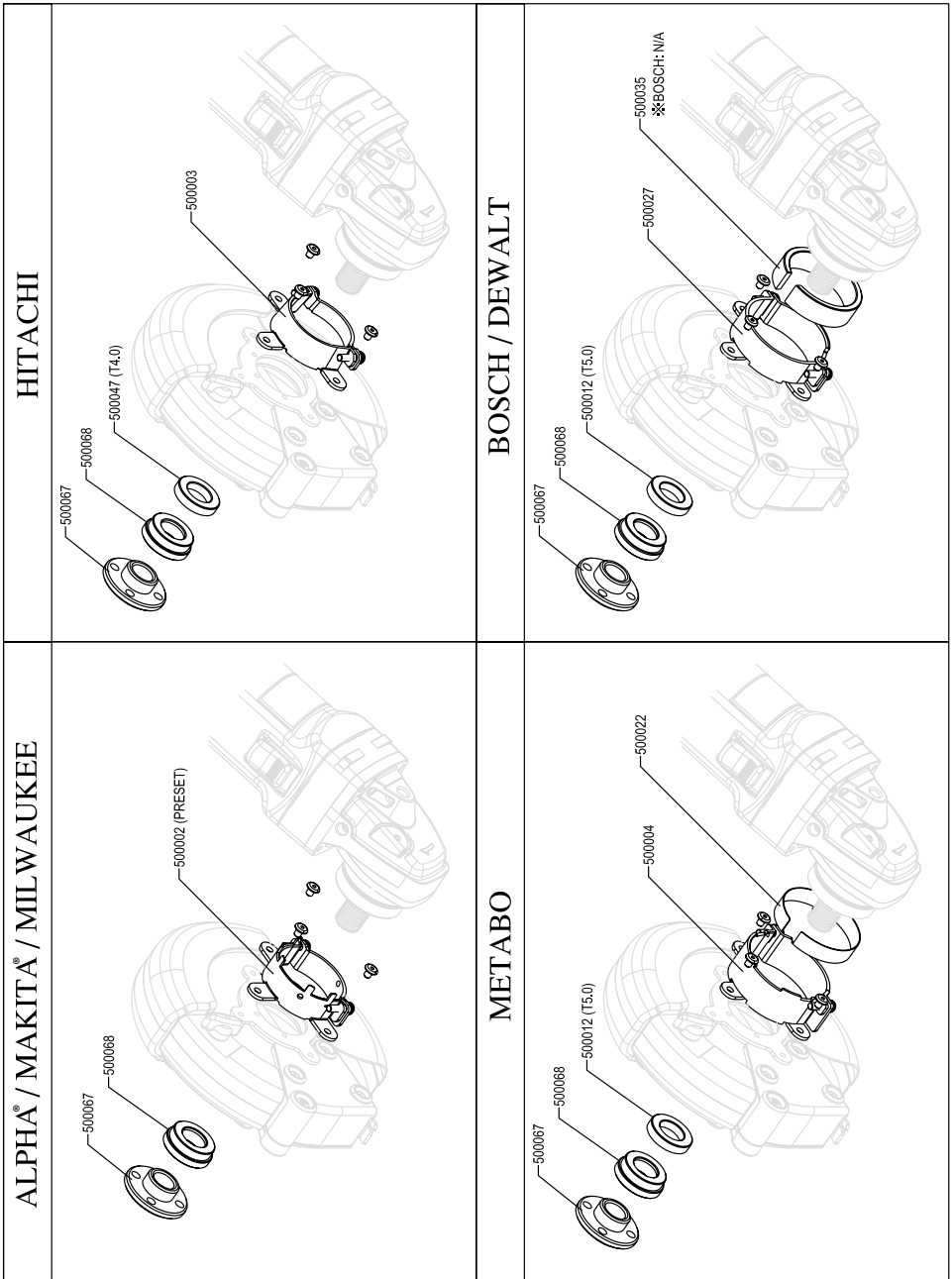


Figure-3

INSTALLATION OF THE SPARK PROTECTION COVER

WARNING!

1. Be sure to turn off the variable-speed angle grinder and remove the plug from the electrical outlet before attaching and installing the Spark Protection Cover.
2. Make sure the Spark Protection Cover is securely attached; otherwise it may come loose which could cause injury.
3. If you installed the Spark Protection Cover to a variable-speed angle grinder but the connector is loose and can not be securely attached, do not use the Spark Protection Cover. Using it in this state could cause injury.

► INSTALLING TO ALPHA®, MAKITA® OR MILWAUKEE VARIABLE-SPEED ANGLE GRINDER

1. Dismantle the original safety guard from the variable-speed angle grinder.
2. Remove the screws from the head of the grinder.
3. Turn the grinder body to move the switch (SW) to the upper position. (Switch should not touch the workpiece)
4. Re-tighten the screws to secure.

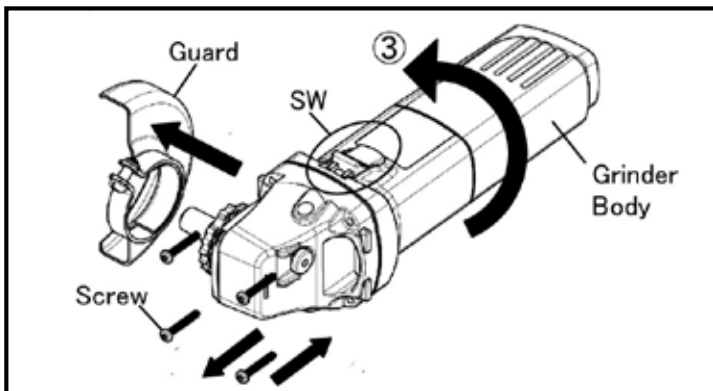


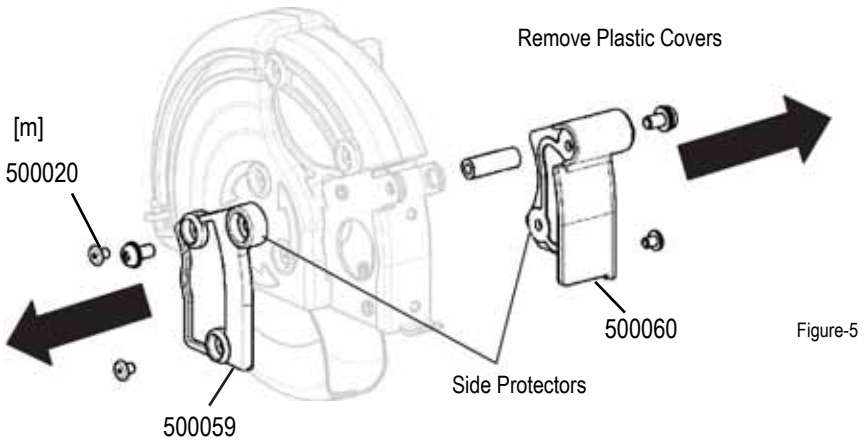
Figure-4

REPLACEMENT OF THE SIDE PROTECTOR A & B

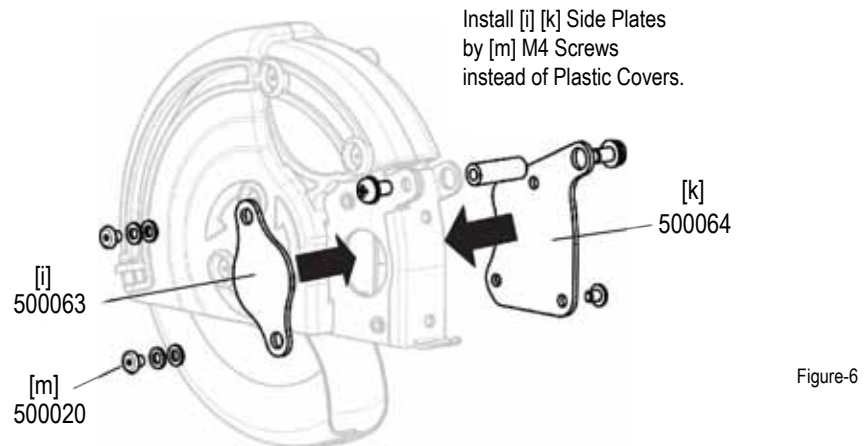
⚠ WARNING!

Be sure to remove plastic covers and replace with Side Plates A and B (Part no. 500063 & 500064) before use.

Step 1



Step 2



INSTALLING THE CONNECTOR & THE COMBINATION FLANGE, LOCKNUT & SPACER

1. Choose the proper Connector for the Grinder.
(See below)

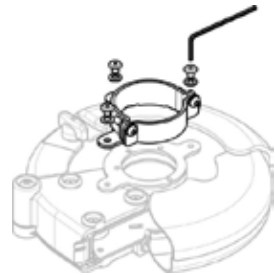


Figure-7

	ALPHA® MAKITA® MILWAUKEE	HITACHI	BOSCH	METABO	DEWALT
Connector & Collar	 FACTORY PRESET				
Flange	500068				
Lock Nut	500067				
Spacer	N/A	500047/T4.0	500012/T5.0		

⚠ WARNING!

Be sure to turn off the grinder and remove the plug from the electrical outlet before installation.

2. Open the guard of the spark protection cover and attach to the Grinder by tightening the screws on the Connector.

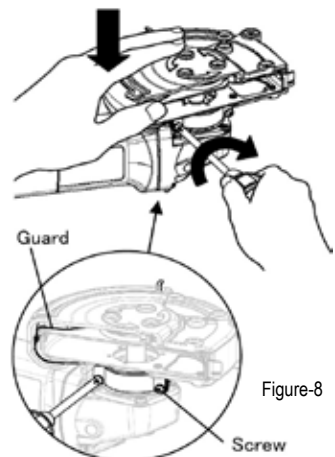


Figure-8

3. Adjust the angle of the Grinder so that it sits flat on the workpiece.

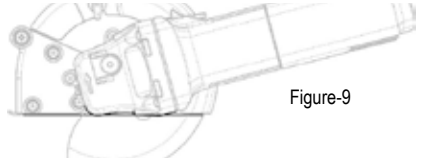


Figure-9

4. Tightly secure the Spark Collection Cover flush against the grinder.

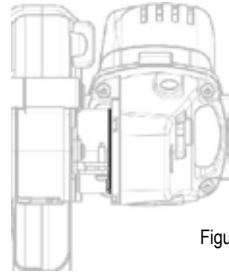


Figure-10

INSTALLATION OF BLADE

1. Loosen the Knob Bolt to open the cover.
2. Press down on Lever to release.
3. Slide protector cover open.

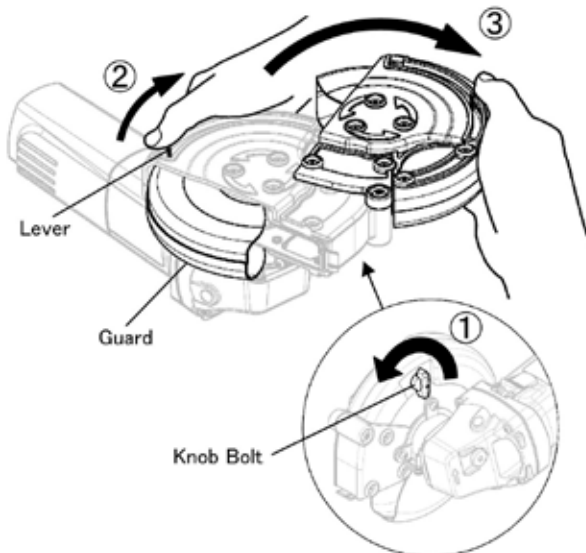


Figure-11

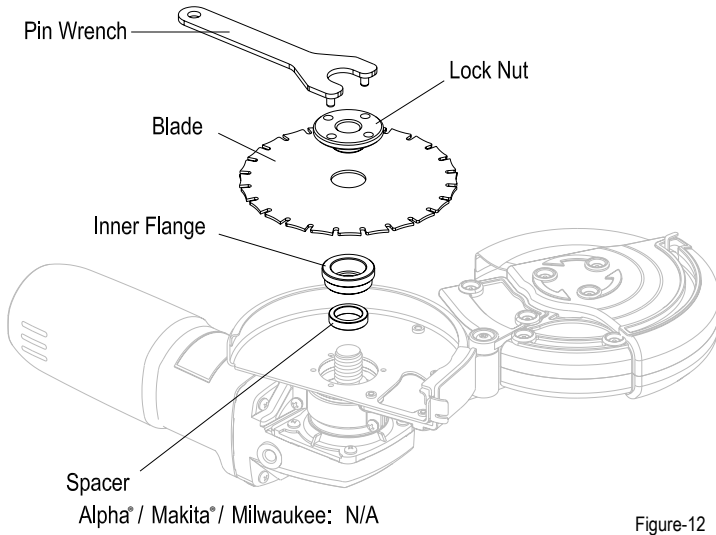


Figure-12

4. Set the blade with ring and base Flange, then tighten the wheel nut.

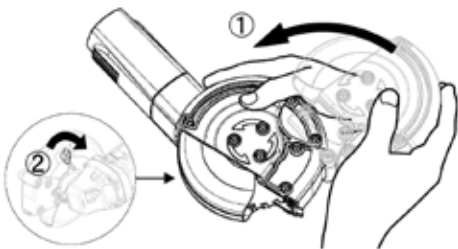


Figure-13

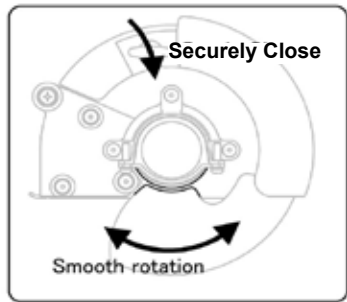


Figure-14

5. Close Main Unit and tighten Knob Bolt.

⚠ WARNING!

Confirm the Guard is moving smoothly

CUTTING APPLICATION

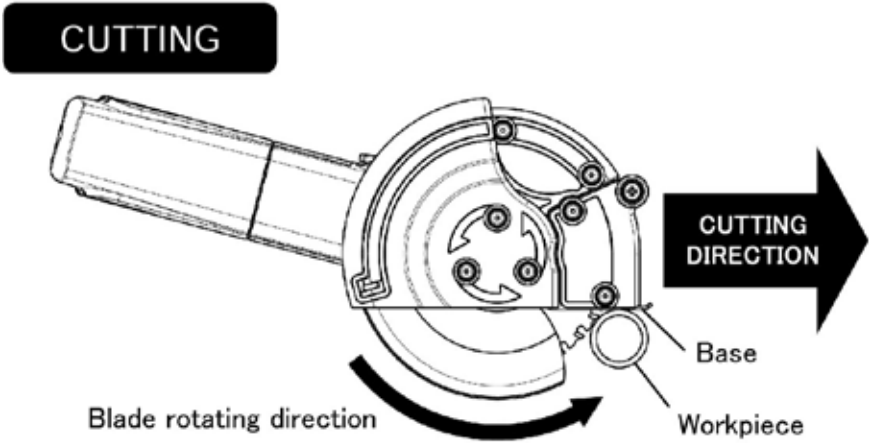


Figure-15

1. Turn on the switch of the grinder
2. Set the base on workpiece
3. Slowly push the grinder forward and start cutting

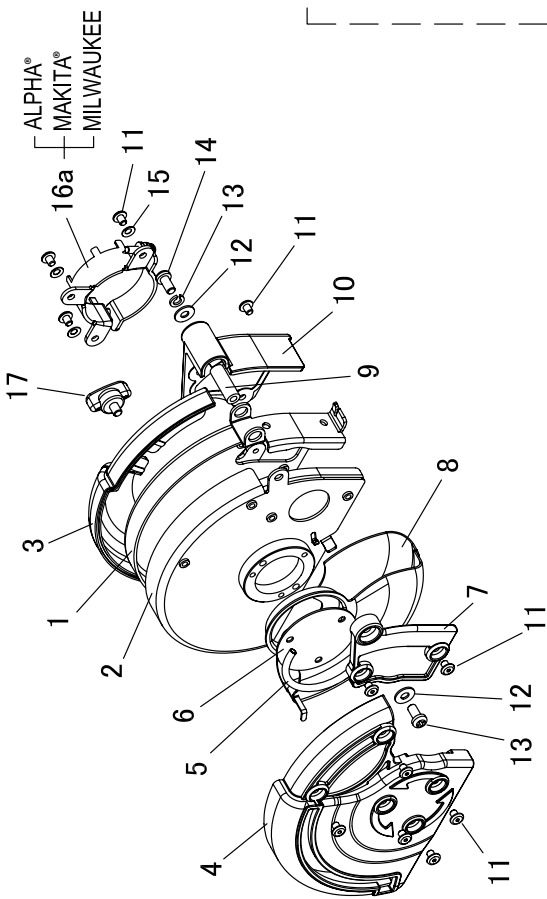
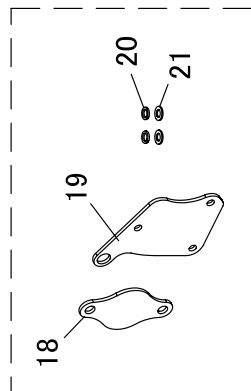
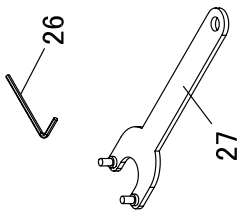
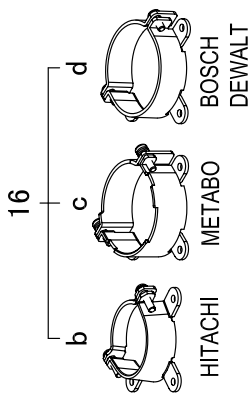
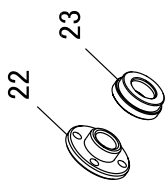
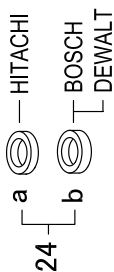
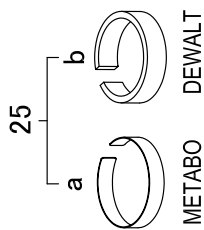
WARNING!

- DO NOT contact the rotating Blade to the workpiece directly. (Securely set the Base on workpiece first)
- Confirm the direction of cutting and Blade rotation.
- Hold the workpiece with clamping devices

ALPHA® ECOGUARD TYPE M PARTS LIST

DRAWING NO.	PART NO.	DESCRIPTION	QUANTITY
1	500054	Main Guard-A	1
2	500055	Main Guard-B	1
3 & 4	500056	Protector Assembly	1
5	500057	Spring	1
6	500058	Holder Plate	1
7	500059	Side Protector-A	1
8	500061	Safety Guard Assembly	1
9	500062	Sleeve	1
10	500060	Side Protector-B	1
11	500020	Flat Head Screw M4x5	13
12	500019	Washer M5	2
13	500018	Spring Washer M5	1
14	500017	Screw M5x10	1
15	500021	Taper Washer	3
16a	500002	Connector Assembly (Alpha®/Makita®/Milwaukee)	1
16b	500003	Connector Assembly (Hitachi)	1
16c	500004	Connector Assembly (Metabo)	1
16d	500027	Connector Assembly (Bosch/Dewalt)	1
17	500049	Knob Bolt (M5/White)	1
18	500063	Side Plate-A	1
19	500064	Side Plate-B	1
20	500065	Spring Washer M4	2
21	500066	Washer M4	2
22	500067	Lock Nut	1
23	500068	Inner Flange	1
24a	500047	Spacer (T4.0/Hitachi)	1
24b	500012	Spacer (T5.0/Metabo/Bosch/Dewalt)	1
25a	500022	Collar (Metabo)	1
25b	500035	Collar (Dewalt)	1
26	500024	Hex. Wrench	1
27	210105	Pin Wrench	1

ALPHA® ECOGUARD TYPE M SCHEMATIC





103 Bauer Drive, Oakland, NJ 07436 • 800-648-7229 • Fax: 800-286-0114
www.alpha-tools.com

Copyright © 2012 Alpha Professional Tools. All rights reserved.

04/2012
