

## Antique Vehicle Hauling Trailers

Limited parking will be provided, free of charge, for antique vehicle hauling trailers and trucks.

You must have your antique vehicle registered for the Saturday show and check off the appropriate area on the registration form for trailer parking to receive the free parking permit at the entrance of the parking area, located on Route 39. This lot will be clearly marked with signs.

## Folder Distribution

Folder distribution will be beside the Hershey Region main tent, on the Chocolate Field, Wednesday, Thursday and Friday. Walk-ins only! There will be no vehicle traffic allowed on Chocolate Field to pick up packets. Saturday folder distribution will be on the show field. Vehicle registration and tickets to all events can be picked up at folder distribution.

NOTE: A **confirmation** with registration number will be provided by enclosing a self-addressed stamped envelope.

For additional information, write to: AACA Hershey Region, PO Box 305, Hershey, PA 17033.

The Hershey Region AACA telephone is available Monday and Wednesday from 6 pm to 8 pm EST, July 15 to August 21, 2015, (717) 566-7720—NO COLLECT CALLS.

## Car Corral

Cars for sale must be at least **25 years old**.

AACA recognized vehicles only. No Street Rods, trailers, rollbacks, campers or parts are permitted. The car corral is for authorized vehicle sales only. A PA sales tax license is not required to sell vehicles in the Car Corral. Space is limited, so only 2 spaces per AACA membership will be sold during summer registration (with a maximum pre and summer registration of 3 spaces per membership). If available, spaces will be sold during show. Spaces will be approx. 10' by 20'. Spaces will be sold first come/first served. No private Jiffy Johns or tents allowed in Car Corral area.

**2015 NATIONAL AACA MEMBERSHIP  
IS REQUIRED FOR ALL FLEA MARKET  
& CAR CORRAL VENDORS**

## Flea Market

The 2015 flea market covers 9,000+ spaces. Pre-registered vendors were sent confirmation of their spaces in April.

Flea market spaces are approximately 10' wide by 30' deep. All vendors will have flea market maps, instructions and windshield stickers mailed to them after September 1, 2015. It is the vendors' responsibility to obtain the Pennsylvania State Tax License which must be displayed during flea market sales.

The flea market will officially open Wednesday morning, October 7th, and will operate for four days. Vendors may set up on Tuesday, weather permitting.

The flea market will NOT operate on Sunday, October 11, 2015.

## Handicapped Information

Convenience vehicles, battery operated for physically impaired, contact: **Scooter Bug - (800) 726-8284**. Email: [info@scooterbugmobilityrentals.com](mailto:info@scooterbugmobilityrentals.com), [www.scooterbugmobilityrentals.com](http://www.scooterbugmobilityrentals.com). Recognized handicapped personal mobility carts can be registered at the maintenance building near the employee entrance off Hersheypark Drive.

No motorbikes, scooters, mini-bikes, Segways, motorcycles, **2 or 3-wheel bicycles**, or private motorized carts (including golf carts) will be allowed to operate on the meet grounds for the safety of our visitors and members.

## Day Parking and Camping

Fees for day parking and self-contained motorhomes/RV camping in the vicinity of the flea market are controlled by the Hershey Entertainment and Resort Company. Shower facilities located in the Maintenance Building will be available for vendors' use at a nominal fee.

## Friday Race Car Condition Run and High-Wheeler Event

The Race Car Condition Run and High-Wheeler event will be held in the stadium starting at 11 am on Friday, October 9th. In the event of inclement weather, starting time will be later and announced on the PA system.

## FIRM Registration Deadline

Postmarked by

**August 15, 2015  
NO EXCEPTIONS**

## Schedule of Events

### Tuesday, October 6, 2015

8:30 am Flea Market Set-up  
Approx. (Weather permitting)  
4 pm-7 pm AACA Library Yard Sale

### Wednesday, October 7, 2015

7 am Flea Market Open  
Car Corral Open for preregistered vehicles  
9 am Car Corral Open for non-preregistered  
11-3 pm Folder distribution located on Chocolate field beside Hershey Region main tent

### Thursday, October 8, 2015

7 am Flea Market Open  
Car Corral Open  
11-3 pm Folder distribution located on Chocolate field beside Hershey Region main tent  
7 pm Old Time Movies in the Music Box Theatre

### Friday, October 9, 2015

7 am Flea Market Open  
Car Corral Open  
11 am Race Car Condition Run in Stadium (spectators welcome)  
Followed by The Hughes High-Wheeler Event in the Stadium  
11-3 pm Folder distribution located on Chocolate field beside Hershey Region main tent  
2 pm Judges School - Giant Center - followed by CJE (Continuing Judges Education)  
7 pm Talent Show in the Music Box Theatre

### Saturday, October 10, 2015

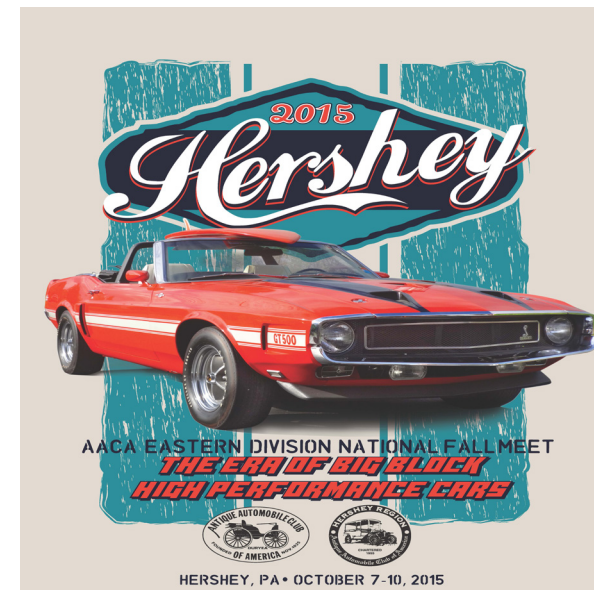
7 am Show Cars enter field (time approximate)  
Flea Market Open  
Car Corral Open  
7-10 am Registration Open on Show Field  
10 am Vehicle Judging Begins  
11:30 am Ladies Luncheon at the Hotel Hershey  
12-2 pm Junior Display near Show Field  
6:15-7 pm Social at Hershey Convention Center  
7 pm Awards Banquet - Hershey Conven. Center

For updates and field maps go to:  
[www.hersheyaaca.org](http://www.hersheyaaca.org)

# Antique Automobile Club of America



## 2015 Eastern Division National Fall Meet



Hosted by the  
Hershey Region AACA  
October 7-10, 2015  
Hershey, Pennsylvania

**The AACA Hershey Region**, host of the 2015 Eastern Division Fall Meet, welcomes you to “The Era of Big Block High Performance Cars.” We encourage all members to register their vehicles for judging. The meet plaque will be given to each registered vehicle when entering the judging field.

The judging of vehicles will begin promptly at 10 am on Saturday. **Any vehicle arriving after 10 am WILL NOT be judged.** All vehicles must remain on the judging field until released by the Chief Judge. Do not be late! Allow time for traffic flow.

All registered race car owners will be requested to demonstrate running condition on Friday in the stadium at 11 am. All High-Wheelers owners should plan to participate in the annual George M. Hughes Trophy event at in the stadium on Friday. Spectators are welcome, but must remain in the seating areas. The time for these two events may change due to weather conditions. Please listen for field announcements.



### AACA National Headquarters

During the Fall Meet week, the hours will be from 8 am to 4:30 pm, Monday-Friday. Look for us on the Chocolate Field spaces C3H-7 from Wednesday to Saturday, as well as in front of the Giant Center Wednesday to Friday and near the show field on Saturday. National membership information is available near the Hershey Region Main Tent and membership trailers/tents/booths are located throughout the flea market areas. For info: 717-534-1910. Web: [www.aaca.org](http://www.aaca.org).

### AACA Library

The AACA Library will hold extended hours during the week of the Fall Meet. We will be open 8 am to 4:30 pm Monday, Wednesday & Friday and from 8 am to 8 pm Tuesday & Thursday. Special displays will feature antique automobile literature and memorabilia. Library staff will be available to assist members with research and photocopy needs and a color copier is available. For more information please call (717) 534-2082 or visit [www.aacalibrary.org](http://www.aacalibrary.org).

### AACA Library Yard Sale

Tuesday, October 6th, 4:00 PM – 7:00 pm

In the lower level of the library we will be selling a wide variety of duplicate material including: sales literature, manuals and books.

### AACA Museum

The AACA Museum features magnificent cars from the 1890s – 1980s and is located off Route 39, approximately 1 mile north of Hersheypark Dr. Special Fall Meet Hours: Wednesday, Thursday & Friday 9 am - 9 pm, Monday, Tuesday and Saturday 9 am - 5 PM. Bring your AACA membership card for free admission. For more information call 717-566-7100, [www.aacamuseum.org](http://www.aacamuseum.org).

### AACA Museum Special Exhibits

**Motorbikes for the Masses** features a variety of mopeds and scooters. Inexpensive, reliable, easy to maneuver and park transportation for a crowded urban area is where these really shine compared to “traditional” motorcycles. This exhibit honors these under-appreciated and often ridiculed machines.

**A Family Affair: Station Wagons** showcases both familiar and lesser known examples of station wagons and their impact on family life from their starting in the teens through their popularity in the 50s and 60s as America developed into a two-car family. Remember the Wagon Queen Family Truckster from National Lampoon’s Vacation? How about Carol Brady’s Plymouth Satellite wagon from The Brady Bunch? Do you have fond memories as a kid of riding in the “way back” of the Vista Cruiser with a picnic cooler on the way to a family outing? If you do, you’re not alone. We’re celebrating those days before minivans, SUVs and soccer moms, before GPS units replaced paper road maps and in-car entertainment systems replaced ‘spot the license plate’ games and such.

**Cammack Tucker Gallery** – Explore the world’s largest collection of Tucker automobiles, engines and other memorabilia in this fabulous permanent exhibit.

### New for 2015 - TorqToberfest

October 7th to 9th, 2015

Join the fun of this behind the scenes bash as we open up our super secret storage building – “Jim’s Place” for the ultimate meet week party! We’ll have different themed foods each night along with craft beer, wine and sodas, entertainment & more! The perfect place for you and your friends or clubs to gather during meet week in Hershey. Don’t miss it! Advance tickets required – visit us online or at the AACA Museum tent on the chocolate field for tickets and details! Visit: [TorqToberfest.com](http://TorqToberfest.com)

Please drink responsibly - don’t drink and drive.

### RM Sotheby’s Auction

All roads lead to Hershey! The historic Hershey Lodge is once again the setting for RM Sotheby’s annual sale, October 8th – 9th, a feature attraction of the AACA Eastern Division Fall Meet.

This mainstay event on the global collector car calendar is known for the presentation of exceptional Brass and Classic Era motor cars, with a strong emphasis on significant American marques. A testament to the quality of the automobiles on offer, RM Sotheby’s posted its strongest Hershey results to date in 2014, with more than \$14 million in total sales and an impressive 93 percent of all lots sold. Top honors went to the stately 1930 Cadillac V-16 Roadster offered from John Moir’s unique A-to-Z Car Collection, which achieved an incredible \$1,100,000, setting a new auction record for the marque.

This year’s Hershey auction will see another outstanding lineup of more than 100 important and historic blue-chip automobiles cross the podium, carefully curated by RM’s international team of specialists.

RM Sotheby’s participation in meet week festivities will again extend to sponsorship of the AACA group of families and its mission to preserve automotive history.

For full event details, an updated list of entries, and consignment information, please visit [www.rmsothebys.com](http://www.rmsothebys.com) or call 1-800-211-4371 (+1-519-352-4575 outside North America).

### Thursday Night Movies

Experience nostalgia with old time movies, favorites of all of our flea market vendors and friends. These movies will be shown, free of charge, in the Music Box Theatre beginning at 7 pm. Everyone welcome!

### Friday Night Talent Show

The Annual Family Entertainment Talent Show has become a very popular event of the Fall Meet. Show time is 7 pm, Friday evening, in the Music Box Theatre and is free of charge.

Participation by AACA vendors and visitors is invited. A popular local band will entertain and provide backup, upon prior request, to participants.

Entertainment will be suitable for **all** family members. Pre-registration is required. To register and to obtain details, please write to: Holly Caudill, 6 Lynnwood Drive, Palmyra, PA 17078.

### Saturday Ladies’ Luncheon

This sit down special luncheon will be most enjoyable. Tickets will be \$22.00. **The tickets will be in your car registration packet - not mailed.** Lunch is 11:30 am to 2 pm at The Hotel Hershey.

### Saturday Awards Banquet

The Eastern Division Fall Meet Banquet will be held at the beautiful Hershey Lodge and Convention Center. If you are not attending dinner, you are welcome to join us after the dinner. Tickets will be collected at the door.

### Juniors at Hershey

Juniors at Hershey is a project of the Hershey Region and the AACA Youth Committee. Join us for the 19th Annual Junior Display for youth ages up to 15. The event will be held on Saturday, October 10 from 12 to 2 pm, in front of the Giant Center.

Participants will reassemble and prepare a restored Alexander Reynolds mini bike for judging. The evolution of automotive lighting will be shown - a hands on display of bulbs to seal beams to high tech bulbs. We will celebrate Carroll Shelby’s design and racing accomplishments.

### Buses

Buses will operate between off-site stops and the flea market fields between the hours of 8 am & 5 pm on Wednesday through Friday. Saturday buses will operate between 7 am & 3 pm. Off-site and field shuttles will be available for the following pick-up/drop-off points:

AACA National Hdqrs/Library (closed Saturday)  
Hershey Lodge and Convention Center  
AACA Museum  
Spring Hill Suites  
Comfort Inn - at the Park  
Best Western Inn Hershey  
Hersheypark Camping Resort  
Hersheypark Drive at Giant Center  
(south side of road)  
Hersheypark Drive at Red Field Flea Market  
Entrance (south side of road)  
Hersheypark Drive at Stadium Road

### Judges School

**Friday October 9, 2015 ~ 2 pm**

Judging School is now located in the Giant Center - followed by CJE (Continuing Judges Education).