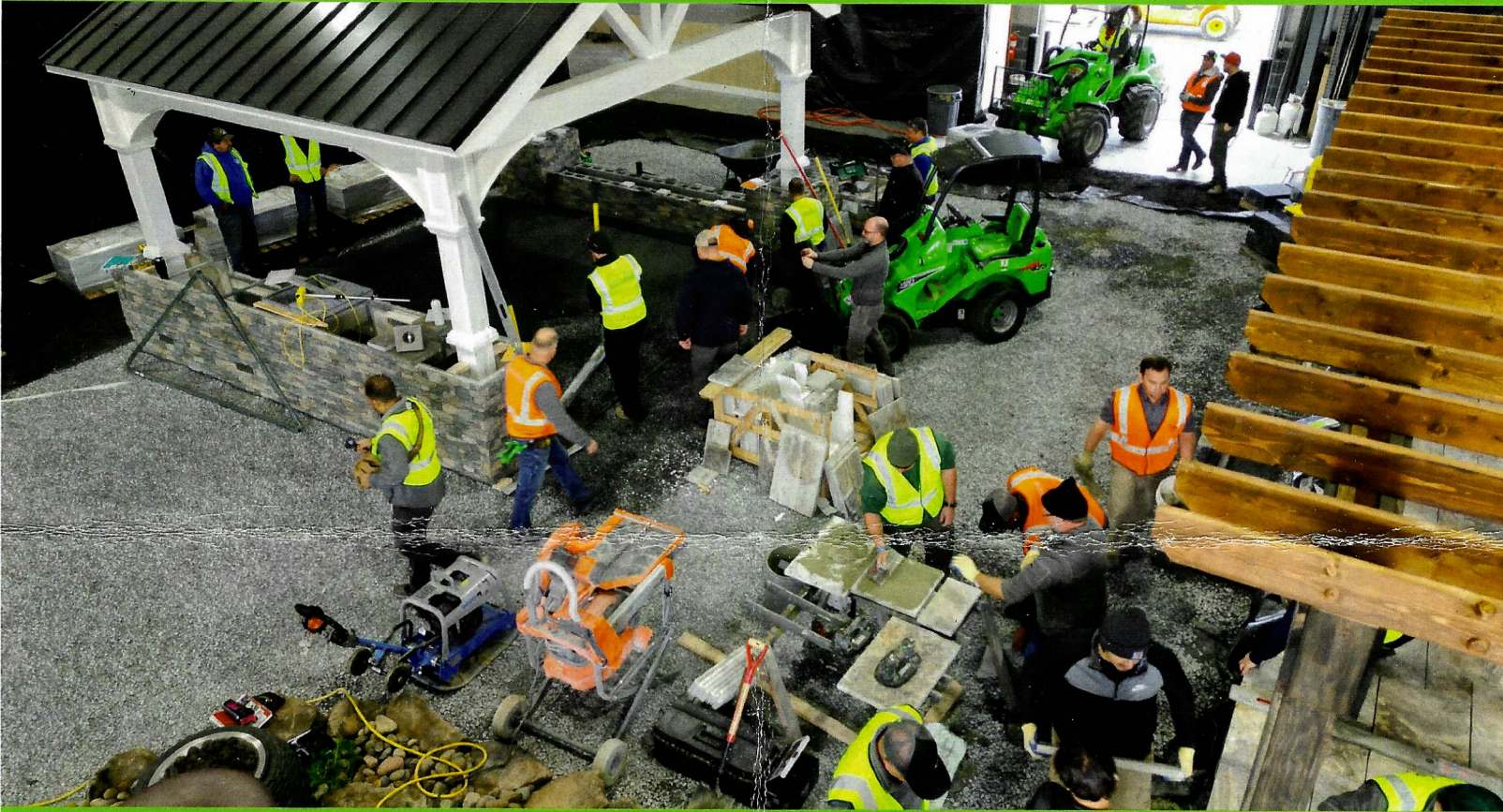


FIVE DAYS OF HANDS-ON MASTERY TRAINING

FEB. 26TH - MAR. 1ST 2024
NEW HOLLAND, PA

Advance your skills to become an elite contractor.

PERMEABLE/HYBRID HARDSCAPES • RETAINING WALLS • WATER FEATURES • LANDSCAPING • LIGHTING • PAVILIONS
SYNTHETIC TURF • PUTTING GREENS • FIREPLACES • OUTDOOR KITCHENS • DECK OVERLAY • TRASS BED WITH PORCELAIN



Pave Tool
INNOVATORS

yes >>>
express



SAUDERS
HARDSCAPE SUPPLY

outdoorlivingmastery.com



SCAN ME!

Next Level Hands-On Sales|Design|Build Training