

ALPHA®

AUTOMOTIVE TOOLING PRODUCTS



Providing Better Solutions to the Professional

ABOUT ALPHA®

Alpha Professional Tools® was founded in 1986 and has become a leading manufacturer of quality tools for professionals in the natural/engineered stone, porcelain, ceramic, glass, construction, marine and automotive industries. Alpha® provides the best products for cutting, drilling, shaping and polishing all types of materials.

In addition to providing the best products in the industry, Alpha Professional Tools® offers a variety of services to support their products.



Setting the Standard in the Natural Stone Industry



CONTACT INFORMATION

COMPANY HEADQUARTERS & TRAINING CENTER:

Alpha Professional Tools®

103 Bauer Drive

Oakland, NJ 07436

Hours of Operation:

8:30 a.m. – 5:00 p.m. EST

Telephone Number:

201-337-3343

Toll-Free Number:

800-648-7229

Fax Number:

201-337-2216

Customer Service Fax Number:

800-286-0114

Tool Department Fax Number:

201-337-2265

Accounting Department Fax Number:

201-337-2262

E-mail orders to:

orderdesk@alpha-tools.com

E-mail Spare Parts orders to:

tooldesk@alpha-tools.com

Technical Support:

technicalsupport@alpha-tools.com

SALES CONTACTS BY TERRITORY:

Caribbean	201-337-3343	Sales-Caribbean@alpha-tools.com
Central Canada	519-505-7900 / 226-931-4166 / 519-546-9861	Sales-CentralCanada@alpha-tools.com
Central Plains	800-648-7229	Sales-CentralPlains@alpha-tools.com
Florida	786-570-4350	Sales-Florida@alpha-tools.com
International	201-337-3343	Sales-International@alpha-tools.com
Mid-Atlantic	804-382-5357	Sales-Mid-Atlantic@alpha-tools.com
Midwest	630-849-7105	Sales-Midwest@alpha-tools.com
Mountain	480-283-3729 / 602-337-3393	Sales-Mountain@alpha-tools.com
New England	860-933-6626	Sales-NewEngland@alpha-tools.com
Northern CA	925-428-1292	Sales-NorthernCA@alpha-tools.com
Northwest	510-409-9326	Sales-Northwest@alpha-tools.com
NY Metro	973-830-7681	Sales-NYMetro@alpha-tools.com
Ohio Valley	440-364-3759	Sales-OhioValley@alpha-tools.com
Pacific	800-648-7229	Sales-Pacific@alpha-tools.com
South	713-252-9851	Sales-South@alpha-tools.com
Southeast	678-977-1147	Sales-Southeast@alpha-tools.com
Southern CA	714-853-3476	Sales-SouthernCA@alpha-tools.com

Visit us on the web at:

www.alpha-tools.com

Chemical Emergency - Chemtrec:

800-424-9300



*Alpha Professional Tools® product line and pricing is subject to change at any time.
Alpha® is not responsible or liable for typographical errors.*

CONTENTS

CUTTING SYSTEM

CUT-OFF TOOLS

COTE-04, 4" Pneumatic Extended Cut-Off Tool	1
COTR-03, 3" Pneumatic Reversible Cut-Off Tool	2

DRY BLADES

Ultracut GPM Series, the Ultimate Vacuumed-brazed Diamond Blade	3
Ultracut APR Series, Hybrid Blade for Intricate and Flush Cutting Applications	4
Ultracut ABM Series, Exclusively for Pneumatic Cut-off Tools	5

GRINDING & SHAPING

GRINDING / POLISHING TOOLS

GDSA-06, 6" Pneumatic Gear Action Sander / Polisher	6
GDSA-08, 8" Pneumatic Gear Action Sander / Polisher	7
GDSP-05, 5" Pneumatic Gear Action Sander / Polisher	8
ROPS-056, 6" Pneumatic Palm Sander	9

SANDING

Reznet Sanding Blocks, Hand Sanding at its best	10
Reznet Sanding Screen Roll, General Purpose Sanding Roll	11
Reznet DA Backer Pads, Creative Dust Cover with Smart Monting System	12
Reznet Sanding Screen Discs, Virtually Dust-free Sanding Mesh Discs	13

GRINDING DISCS

Vexcel Grinding Disc, Rigid Grinding Disc with Fluoric Rubber Backing	14
Vextra Flat Grinding Disc, General Purpose Flat Grinding Disc	15
Spike Diamond Disc, Coating Removal Made Easy	16
VFlex Flexible Sanding Disc, General Purpose Flexible Sanding Disc	17

CONTENTS

HAND TOOLS AND ACCESSORIES

ACCESSORIES

G-Tape	18
Manifold System	19
Alpha® Hoses	21
HEPA Wet/Dry Vacuum 15-Gal	22
Ecoguard Type M a.k.a. Spark Buster, for Metal Cutting	23
Ecoguard Type G for Grinding Applications	24
Ecoguard Type D, Dust Collection Cover for Drilling Applications	25
AIR-008 Rust Inhibitor Oil	26
Quad Adapter	26

HAND POLISHING SYSTEM

Ceramica Resin Polishing Pads.....	27
Antique Brush Wheels, Create Textured Finishes.....	27

DRY POLISHING

PVA VP Polishing Disc, Polishing System	28
---	----



Cut-Off tools are must-have items for most metal fabricators and automotive restoration shops. There are typically three different types available: In-Line Cut-Off Tool which is more or less the same idea as using a grinder to cut stone; a Standard Cut-Off Tool that is similar to a straight grinder with a safety guard for the general cutting applications; an Extended Cut-Off Tool that is designed to use for difficult to reach areas. Alpha® introduces the COTE-04 Extended Cut-Off Tool. This cut-off tool is 14-3/4" in length and has a newly designed gear head with the spindle lock that has a very low profile to reach the tight and hard-to-reach areas. The COTE-04 comes with a Push-to-Adjust swivel safety guard that changes into 11 positions (126 degree adjustable). The operation is also comfortable with a Built-in Cushion Grip and a rear exhaust design. This tool boasts the industry's strongest motor: a 1.0 HP that enhances the capacity of the Ultracut ABM series blade.



COTE-04

► **SPECIFICATIONS:**

- Free Speed: 14,000 RPM
- Cutting Disc Dimensions: 4" (100mm) x 3/8" (10mm)
- Air Inlet: 1/4" NPT
- Hose Size ID: 3/8" (10mm)
- Air Consumption: 4 CFM (113L/min)
- Length: 14-3/4" (377mm)
- Weight: 3.7 lbs (1.7kg)
- Noise Level: 85 dB(A)
- Recommended Air Pressure: 90 PSI (6.2 Bar)

FEATURES

- Built-in Spindle Lock
- Rear Exhaust
- Built-in Cushion Grip
- Push to Adjust Safety Guard
- 11 Position Adjustable Swivel Guard (126 Adjustable Range)
- Power Motor (1.0HP / 0.7 KW)

PART NO.	SIZE	MAX RPM	TYPE	ARBOR
COTE-04	4"	14,000	Pneumatic	3/8" (10mm)



Cut-Off tools are must-have items for most metal fabricators and automotive restoration shops. There are typically three different types available: In-Line Cut-Off Tool which is more or less the same idea as using a grinder to cut stone; a Standard Cut-Off Tool that is similar to a straight grinder with a safety guard for the general cutting applications; an Extended Cut-Off Tool that is designed to use for difficult to reach areas. Alpha® introduces the COTR-03 Reversible Cut-Off Tool. This cut-off tool is 8-1/16" length and has a special hub that allows for left or right turning of the cutting wheel. The direction of wheel can be changed easily by collar to direct the sparks and debris away from the operator. The operation is also comfortable with rear exhaust design. In addition, the unit has a powerful 0.85 HP motor that enhances the capacity of the Ultracut ABM series blade.



COTR-03

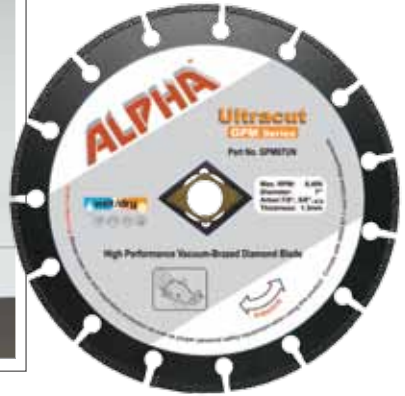
► SPECIFICATIONS:

- Free Speed: 20,000 RPM
- Cutting Disc Dimensions: 3" (75mm) x 3/8" (10mm)
- Air Inlet: 1/4" NPT
- Hose Size ID: 3/8" (10mm)
- Air Consumption: 4 CFM (113 L/min)
- Length: 8-1/16" (204mm)
- Weight: 2 lbs (0.9 kg)
- Noise Level: 83 dB(A)
- Recommended Air Pressure: 90 PSI (6.2 Bar)

FEATURES

- Special Hub allows for Left or Right Turning Cutting Action
- Collar Operated Easy Directional Change
- Safety Throttle Lever
- Rear Exhaust
- Powerful Motor (0.85 HP / 0.63 KW)

PART NO.	SIZE	MAX RPM	TYPE	ARBOR
COTR-03	3"	20,000	Pneumatic	3/8" (10mm)



GPM SERIES

The Alpha® Ultracut GPM Series is made for building contractors and fabricators who work with metal and composite materials. The GPM Series blade fits on most popular hand-held electric power tools for demanding metal applications. Cut galvanized steel roofing sheets and corrugated granite granule coated metal roof tile, easily with a worm-drive saw without worrying about carbide tip loss, compression marks and burning of paint. Since the Alpha® Ultracut maintains excellent cutting performance at the maximum cutting depth throughout its life, iron workers and underwater welders will appreciate using this blade. The Ultracut GPM Series cuts angle iron, pipe, electrical conduit, re-bar, metal stud, structural metal, sheet metal, grid, and stainless steel along with wood, plastics, composite materials, masonry and concrete.

FEATURES

Fits most popular High-speed Angle Grinders and Circular Saws.

PART NO.	SIZE	MAXIMUM RPM	THICKNESS	ARBOR(S)
GPM0420	4"	14,500	1.5mm	20mm, 5/8"
GPM4578	4-1/2"	13,200	1.5mm	7/8", 20mm
GPM0578	5"	12,200	1.5mm	7/8"
GPM06UN	6"	10,100	1.9mm	7/8", 5/8", ◀
GPM07UN	7"	8,400	1.9mm	7/8", 5/8", ◀
GPM08UN	8"	7,400	1.9mm	7/8", 5/8", ◀
GPM0978	9"	6,600	2.2mm	7/8", 5/8"



APR SERIES

The Alpha® Ultracut APR Series combines the high-performance of the Alpha® Ultracut GPM Series with our unique design for flush cutting applications. Unlike other blades, the Ultracut APR Series blade accepts our exclusive Quad Drive Adapter, which eliminates the required lock nut, so it is perfect for “flush cutting” applications. For a quick and easy solution, use this blade to completely remove anchor bolts, concrete re-bar and pipe from floors and walls. This blade brings accuracy and precision flush cutting to the manufacturing facility or the jobsite.

PART NO.	SIZE	THICKNESS	MAX RPM	ARBOR(S)
APR45QA	4-1/2"	1.7mm	13,200	20mm Quad Drive
APR05QA	5"	1.7mm	12,200	20mm Quad Drive
APR07QA	7"	1.9mm	8,400	20mm Quad Drive
BAH-5/8	Brass Adapter	5/8"-11	—	5/8" Thread/Quad Drive
AAH-7/8	Aluminum Adapter	7/8"	—	7/8" Thread/Quad Drive
AAH-20	Aluminum Adapter	20mm	—	20mm Thread/Quad Drive

FEATURES

Fits most popular Grinders



BRASS ADAPTER



ALUMINUM ADAPTER



ABM SERIES

The Alpha® Ultracut ABM Series is designed for use on most popular pneumatic cut-off tools which are widely used in automotive body shops and many other industrial manufacturing facilities. The Alpha® Ultracut doesn't change diameter during the cutting operation and provides maximum cutting depth throughout its life. The Alpha® Ultracut has bi-directional rotation so that you can use on reversible cut-off tools, which could be useful to direct sparks and debris away from the operator.



PART NO.	SIZE	THICKNESS	MAX RPM	ARBOR(S)
ABM0338	3"	1.5mm	20,000	3/8" (10mm)
ABM0438	4"	1.5mm	18,000	3/8" (10mm)

FEATURES

Fits most popular Pneumatic Cut-off Tools



The Alpha® gear-action sander/polishers offer the best of a single-action sander and a dual-action sander. These tools have a very high torque that is best suited for sanding and polishing applications. The low speed prevents the risk of burning on paint or the surface as well as prevents the surface from becoming “hairy” when used on FRP. The high torque makes the sanding action very aggressive so that it is best suited to strip rust, paint and other coating materials without creating distortion. In addition, strong torque also helps with the chemical applications when used with foam or a wool bonnet for the final polishing process of paint. The Alpha® gear-action sanders will not leave a swirl mark because of the orbital action typically caused by a rotary polisher that offers a lot of torque. The units have a dust port available to hook-up to a dust hose for a virtually dust-free central vacuum sanding application. Combine this with the Alpha® HEPA vacuum for great dust control and a cleaner environment!

► SPECIFICATIONS:

- Free Speed: 900 RPM
- Pad Size: 6" (152mm)
- Orbit Diameter: 3/16" (5mm)
- Air Inlet: 1/4" NPT
- Hose Size ID: 3/8" (10mm)
- Air Consumption: 3.5 CFM (99L/min)
- Length: 11-3/4" (300mm)
- Weight: 4.2 lbs (1.9kg)
- Noise Level: 84 dB(A)
- Recommended Air Pressure: 90 PSI (6.2 Bar)

FEATURES

- Low Speed High Torque
- Central Vacuum System
- Random Orbital Fine Polishing and Sanding
- Low Noise

PART NO.	SIZE	DIAMETER	MAX RPM	TYPE	THREADS
GDSA-06	6" (152mm)	3/16" (5mm)	900	Pneumatic	3/8" (10mm)



The Alpha® gear-action sander/polishers offer the best of a single-action sander and a dual-action sander. These tools have a very high torque that is best suited for sanding and polishing applications. The low speed prevents the risk of burning on paint or the surface as well as prevents the surface from becoming “hairy” when used on FRP. The high torque makes the sanding action very aggressive so that it is best suited to strip rust, paint and other coating materials without creating distortion. In addition, strong torque also helps with the chemical applications when used with foam or a wool bonnet for the final polishing process of paint. The Alpha® gear-action sanders will not leave a swirl mark because of the orbital action typically caused by a rotary polisher that offers a lot of torque. The units have a dust port available to hook-up to a dust hose for a virtually dust-free central vacuum sanding application. Combine this with the Alpha® HEPA vacuum for great dust control and a cleaner environment!

► SPECIFICATIONS:

- Free Speed: 900 RPM
- Pad Size: 8" (203mm)
- Orbit Diameter: 3/16" (5mm)
- Air Inlet: 1/4" NPT
- Hose Size ID: 3/8" (10mm)
- Air Consumption: 3.5 CFM (99L/min)
- Length: 12-3/8" (315mm)
- Weight: 4.4 lbs (2.0kg)
- Noise Level: 84 dB(A)
- Recommended Air Pressure: 90 PSI (6.2 Bar)

FEATURES

- Low Speed High Torque
- Central Vacuum System
- Random Orbital Fine Polishing and Sanding
- Low Noise

PART NO.	SIZE	DIAMETER	MAX RPM	TYPE	THREADS
GDSA-08	8" (203mm)	3/16" (5mm)	900	Pneumatic	3/8" (10mm)



The Alpha® gear-action sander/polishers offer the best of a single-action sander and a dual-action sander. These tools have a very high torque that is best suited for sanding and polishing applications. The low speed prevents the risk of burning on paint or the surface as well as prevents the surface from becoming “hairy” when used on FRP. The high torque makes the sanding action very aggressive so that it is best suited to strip rust, paint and other coating materials without creating distortion. In addition, strong torque also helps with the chemical applications when used with foam or a wool bonnet for the final polishing process of paint. The Alpha® gear-action sanders will not leave a swirl mark because of the orbital action typically caused by a rotary polisher that offers a lot of torque. The units have a dust port available to hook-up to a dust hose for a virtually dust-free central vacuum sanding application.

► **SPECIFICATIONS:**

- Free Speed: 1,300 RPM
- Pad Size: 5" (125mm)
- Orbit Diameter: 3/16" (5mm)
- Air Inlet: 1/4" NPT
- Hose Size ID: 3/8" (10mm)
- Air Consumption: 3 CFM (85L/min)
- Length: 10" (254mm)
- Weight: 2.2 lbs (1.0kg)
- Noise Level: 84 dB(A)
- Recommended Air Pressure: 90 PSI (6.2 Bar)

FEATURES

- One or Two-Handed Operation
- Low Speed High Torque
- Random Orbital Fine Polishing and Sanding
- Lightweight
- Low Noise

PART NO.	SIZE	DIAMETER	MAX RPM	TYPE	THREADS
GDSP-05	5" (125mm)	3/16" (5mm)	1,300	Pneumatic	3/8" (10mm)



Palm Sanders are must-have items for most composite fabricators and automotive body shops. There are typically three different orbital diameters which are 2.5mm, 5mm and 8mm. The choice is dependent on the cutting capacity. Alpha® introduces the ROPS-056 Palm Sander which has a 5mm orbit diameter. Since this is the most popular size for the general purpose applications, these types of tools are easier to work with on large flatter surfaces as compared with a single action sander/polisher. The Alpha® ROPS-056 has a well-balanced, lightweight design that is easy to operate with low noise emissions and little vibration on the hand. This has been made possible, by a composite motor housing and rotor, with ergonomics as a key focal point. The unit also has a dust port available to hook-up to a dust hose for a virtually dust-free central vacuum sanding application. Combine this with the Alpha® HEPA vacuum for a solid solution for dust control!

► SPECIFICATIONS:

- Max. Free Speed: 12,000 RPM
- Pad Size: 6" (150mm)
- Orbit Diameter: 3/16" (5mm)
- Spindle Thread: 5/16"-24
- Air Inlet: 1/4" NPT
- Hose Size ID: 3/8" (10mm)
- Air Consumption: 2 CFM (57L/min)
- Length: 7-3/4" (196mm)
- Weight: 1.5 lbs (0.7kg)
- Noise Level: 76 dB(A)
- Recommended Air Pressure: 90 PSI (6.2 Bar)

FEATURES

- Composite Motor Housing
- Well-Balanced Design
- Low Vibration
- Lightweight
- Low Noise
- Central Vacuum System

PART NO.	SIZE	MAX RPM	TYPE
ROPS-056	6" (150mm)	12,000	Pneumatic



The Alpha® Reznert Sanding Blocks are designed with comfort in mind for the longest and toughest jobs. Along with Alpha® HEPA Vacuum, the Sanding Block performs a virtually dust-free application and ensures a cool sanding application. Alpha® currently offers three popular sizes for the hand sanding and polishing application. See Alpha® Reznert Sanding Screen Rolls for availability of grits.



SANDING BLOCKS

PART NO.	SIZE	TYPE	BOND TYPE
RB275005	5" x 2-3/4" (125mm x 70mm)	Hook & Loop Block	Hard
RB275008	8" x 2-3/4" (200mm x 70mm)	Hook & Loop Block	Hard
RB275016	16" x 2-3/4" (400mm x 70mm)	Hook & Loop Block	Hard
VH91100	3/4" x 157-1/2" (20mm x 4m)	Mirka® Hose for Sanding Blocks	



HEPA WET/DRY VACUUM

FEATURES

Available in Popular Sizes; Comes with a Valve and Adapter!

The Alpha® Reznet is a unique multi-purpose sanding product made with a combination of high-quality abrasive grit, a nylon net and a hook & loop backing to remove dust from cutting surfaces. This advanced construction maintains cool cutting during the toughest applications, with difficult to sand materials. Alpha® Reznet provides a virtually dust-free application with the convenience of a hook & loop operation that ensures fast sanding and a long life making it a very cost-effective sanding application. Reznet Sanding Screens are designed to use on the Alpha® Reznet Sanding Block for a hand application. The screens come on a roll 2-3/4" wide by 10 yards in length so it can be cut to size to fit most sanding blocks.


SANDING SCREEN ROLL


PART NO.	SIZE	TYPE	GRIT	QTY	BOND TYPE
RS7100040	2-3/4"x10yds (70mm x 9.1m)	Hook & Loop	40	1	Aluminum Oxide
RS7100080	2-3/4"x10yds (70mm x 9.1m)	Hook & Loop	80	1	Aluminum Oxide
RS7100120	2-3/4"x10yds (70mm x 9.1m)	Hook & Loop	120	1	Aluminum Oxide
RS7100180	2-3/4"x10yds (70mm x 9.1m)	Hook & Loop	180	1	Aluminum Oxide
RS7100240	2-3/4"x10yds (70mm x 9.1m)	Hook & Loop	240	1	Aluminum Oxide
RS7100320	2-3/4"x10yds (70mm x 9.1m)	Hook & Loop	320	1	Aluminum Oxide
RS7100400	2-3/4"x10yds (70mm x 9.1m)	Hook & Loop	400	1	Aluminum Oxide

FEATURES

Easy Cut-to-Size Rolls; Unique Hook & Loop System for Convenient Operation!



The Alpha® Reznert DA Sanding Backer Pads are industrial quality pads for the toughest jobs by the professional. They are designed not only for Alpha® Reznert Discs, but also for standard abrasive products with a hook & loop system. Along with Alpha® HEPA Vacuum, the Reznert DA Dual-Action Sanding Backer Pad performs a virtually dust-free application to ensure a cool sanding application. Alpha® currently offers 5" for the most popular, electric dual-action sanders and a 6" for both electric and pneumatic dual-action sanders.



REZNET DA BACKER PAD



Changeable hardware to match conventional Pneumatic Sander and Festool® Sander.



HEPA WET/DRY VACUUM

FEATURES

Creative Dust Cover Design; Smart Mounting System for Festool, Rupes & Makita Sanders; PUR-Molded for Premium Durability and Flexibility!

PART NO.	SIZE	THICKNESS	MAXIMUM RPM	TYPE	THREADS	DESCRIPTION
RDA50010	5" (125mm)	12mm	12,000	Medium	Makita® /Porter-Cable	Pattern 8+8+1
RDA60516	6" (150mm)	12mm	12,000	Medium	5/16"	Pattern 8+8+1
RDA60517	6" (150mm)	12mm	12,000	Medium	5/16"	Pattern 8+6/8+1
RDA68516	6" (150mm)	12mm	12,000	Medium	M8+5/16"	Pattern 8+8+1
RDA68517	6" (150mm)	12mm	12,000	Medium	M8+5/16"	Pattern 8+6/8+1

The Alpha® Reznert is a unique multi-purpose sanding product made with a combination of high-quality abrasive grit, a nylon net and a hook & loop backing to remove dust from cutting surfaces. This advanced construction maintains cool cutting during the toughest applications, with difficult to sand materials. Alpha® Reznert provides a virtually dust-free application with the convenience of a hook & loop operation that ensures fast sanding and a long life making it a very cost-effective sanding application. Reznert Sanding Screen Discs are designed for Dual Action/Orbital Action/Gear Action Sanders as well as hand pads for the manual application.

PART NO.	SIZE	TYPE	GRIT	QTY	BOND TYPE
RA500040	5"	Hook & Loop	40	50	Aluminum Oxide
RA500080	5"	Hook & Loop	80	50	Aluminum Oxide
RA050120	5"	Hook & Loop	120	50	Aluminum Oxide
RA500120	5"	Hook & Loop	180	50	Aluminum Oxide
RA500240	5"	Hook & Loop	240	50	Aluminum Oxide
RA500320	5"	Hook & Loop	320	50	Aluminum Oxide
RA500400	5"	Hook & Loop	400	50	Aluminum Oxide
RA500600	5"	Hook & Loop	600	50	Aluminum Oxide
RA501000	5"	Hook & Loop	1000	50	Aluminum Oxide
RA501200	5"	Hook & Loop	1200	50	Aluminum Oxide
RA501500	5"	Hook & Loop	1500	50	Aluminum Oxide
RA502000	5"	Hook & Loop	2000	50	Aluminum Oxide
RA503000	5"	Hook & Loop	3000	50	Aluminum Oxide
RA600040	6"	Hook & Loop	40	50	Aluminum Oxide
RA600080	6"	Hook & Loop	80	50	Aluminum Oxide
RA600120	6"	Hook & Loop	120	50	Aluminum Oxide
RA600180	6"	Hook & Loop	180	50	Aluminum Oxide
RA600240	6"	Hook & Loop	240	50	Aluminum Oxide
RA600320	6"	Hook & Loop	320	50	Aluminum Oxide
RA600400	6"	Hook & Loop	400	50	Aluminum Oxide
RA600600	6"	Hook & Loop	600	50	Aluminum Oxide
RA601000	6"	Hook & Loop	1000	50	Aluminum Oxide
RA601200	6"	Hook & Loop	1200	50	Aluminum Oxide
RA601500	6"	Hook & Loop	1500	50	Aluminum Oxide
RA602000	6"	Hook & Loop	2000	50	Aluminum Oxide
RA603000	6"	Hook & Loop	3000	50	Aluminum Oxide
RBP60516	6"	Double Hook & Loop	-	1	Flexible Interface Pad
RA800040	8"	Hook & Loop	40	10	Aluminum Oxide
RA800080	8"	Hook & Loop	80	10	Aluminum Oxide
RA800120	8"	Hook & Loop	120	10	Aluminum Oxide
RA800180	8"	Hook & Loop	180	10	Aluminum Oxide
RA800240	8"	Hook & Loop	240	10	Aluminum Oxide
RA800320	8"	Hook & Loop	320	10	Aluminum Oxide
RA800400	8"	Hook & Loop	400	10	Aluminum Oxide
RA800600	8"	Hook & Loop	600	10	Aluminum Oxide
RA801000	8"	Hook & Loop	1000	10	Aluminum Oxide
RA801200	8"	Hook & Loop	1200	10	Aluminum Oxide
RA801500	8"	Hook & Loop	1500	10	Aluminum Oxide
RA802000	8"	Hook & Loop	2000	10	Aluminum Oxide
RA803000	8"	Hook & Loop	3000	10	Aluminum Oxide
RA900040	9"	Hook & Loop	40	10	Aluminum Oxide
RA900060	9"	Hook & Loop	60	10	Aluminum Oxide
RA900080	9"	Hook & Loop	80	10	Aluminum Oxide
RA900100	9"	Hook & Loop	100	10	Aluminum Oxide
RA900120	9"	Hook & Loop	120	10	Aluminum Oxide
RA900150	9"	Hook & Loop	150	10	Aluminum Oxide
RA900180	9"	Hook & Loop	180	10	Aluminum Oxide


SANDING SCREEN DISCS

FEATURES

Available in 5", 6", 8" and 9" with Aluminum Oxide; Unique Hook & Loop System for Convenient Operation!



The Vexcel is designed for heavy duty material removal applications whether it is cast iron, steel, stainless steel, non-ferrous metals, metal alloys, carbon fiber reinforcement plastic (CFRP), glass fiber reinforcement plastic (GFRP), natural and engineered stones. The Rigid steel base with a curved design creates a very aggressive grinding action and the fluoroc rubber backing reduces noise and vibration. It minimizes sparking so you can avoid toxic air and pollution. The Vexcel has heavy duty multi-layers of diamond grits to ensure aggressive material removal and the longest life. The Vexcel grinding disc is highly recommended for grinding of cast iron and welding beam. Vexcel grinding disc is available in 4.5", 5" and 7" with a 7/8" arbor or a 5/8"-11 zinc hub.

VEXCEL

FEATURES

Rubber backing to reduce noise and vibration



rubber

PART NO.	SIZE	MAX RPM	ARBOR(S)	RECOMMENDED FOR	GRIT
VDR4525	4-1/2"	13,200	7/8"	General Purpose	25
VDR452H	4-1/2"	13,200	5/8"-11	General Purpose	25
VDR4535	4-1/2"	13,200	7/8"	General Purpose	35
VDR453H	4-1/2"	13,200	5/8"-11	General Purpose	35
VDR4550	4-1/2"	13,200	7/8"	General Purpose	50
VDR455H	4-1/2"	13,200	5/8"-11	General Purpose	50
VDR4580	4-1/2"	13,200	7/8"	General Purpose	80
VDR458H	4-1/2"	13,200	5/8"-11	General Purpose	80
VDR5025	5"	12,200	7/8"	General Purpose	25
VDR502H	5"	12,200	5/8"-11	General Purpose	25
VDR5035	5"	12,200	7/8"	General Purpose	35
VDR503H	5"	12,200	5/8"-11	General Purpose	35
VDR5050	5"	12,200	7/8"	General Purpose	50
VDR505H	5"	12,200	5/8"-11	General Purpose	50
VDR5080	5"	12,200	7/8"	General Purpose	80
VDR508H	5"	12,200	5/8"-11	General Purpose	80
VDR7025	7"	8,400	7/8"	General Purpose	25
VDR702H	7"	8,400	5/8"-11	General Purpose	25
VDR7035	7"	8,400	7/8"	General Purpose	35
VDR703H	7"	8,400	5/8"-11	General Purpose	35
VDR7050	7"	8,400	7/8"	General Purpose	50
VDR705H	7"	8,400	5/8"-11	General Purpose	50
VDR7080	7"	8,400	7/8"	General Purpose	80
VDR708H	7"	8,400	5/8"-11	General Purpose	80

Designed to grind steel, stainless steel and non-ferrous metals for the *Ex* ZONE where spark reduction is a priority. The Vextra is great for removing rust, burrs, mill scale, paint on metal surface as well as epoxy, glues and adhesives without clogging the grinding surface. The sandwich construction with rubber makes the grinding disc light, reduces vibration and noise to reduce fatigue of an operator. The Vextra has an optimized diamond grit and layer arrangement offering a long life and consistent performance without downtime. You can maximize the disc coverage by grinding flat to improve productivity and efficiency. The Vextra grinding disc can be used on natural stones, engineered stone/ quartz surface, wood and rubber and is available in 4.5", 5" and 7" with a 7/8" arbor or a 5/8"-11 zinc hub.



VEXTRA

FEATURES

Designed to work on flat surfaces for maximum coverage

sandwich construction



open-mesh

PART NO.	SIZE	MAX RPM	ARBOR(S)	RECOMMENDED FOR	GRIT
VDD4535	4-1/2"	13,200	7/8"	General Purpose	35
VDD453H	4-1/2"	13,200	5/8"-11	General Purpose	35
VDD4550	4-1/2"	13,200	7/8"	General Purpose	50
VDD455H	4-1/2"	13,200	5/8"-11	General Purpose	50
VDD4580	4-1/2"	13,200	7/8"	General Purpose	80
VDD458H	4-1/2"	13,200	5/8"-11	General Purpose	80
VDD5035	5"	12,200	7/8"	General Purpose	35
VDD503H	5"	12,200	5/8"-11	General Purpose	35
VDD5050	5"	12,200	7/8"	General Purpose	50
VDD505H	5"	12,200	5/8"-11	General Purpose	50
VDD5080	5"	12,200	7/8"	General Purpose	80
VDD508H	5"	12,200	5/8"-11	General Purpose	80
VDD7035	7"	8,400	7/8"	General Purpose	35
VDD703H	7"	8,400	5/8"-11	General Purpose	35
VDD7050	7"	8,400	7/8"	General Purpose	50
VDD705H	7"	8,400	5/8"-11	General Purpose	50
VDD7080	7"	8,400	7/8"	General Purpose	80
VDD708H	7"	8,400	5/8"-11	General Purpose	80

Coating Removal at its Best



SPIKE

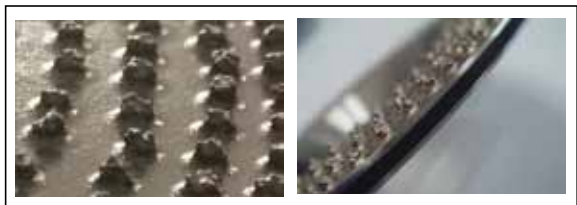
Patented technology makes this unique product available for “Clog-Free” coating removal for epoxy, urethane, glue and adhesives for surface preparation. An Open-mesh diamond layer removes debris fast avoiding heat buildup. Each diamond bead was made with multiple diamond grits to maintain a sharp cutting capability for a long time. The Spike Disc has a sandwiched-rubber cushioned light-weight body that reduces noise and vibration, so that operator can work for longer periods of time. Spike Disc is available in 4.5”, 5” and 7” with a 7/8” arbor or a 5/8”-11 zinc hub.

This Disc is also available with a square arbor that fits the Spring Load System on the Alpha® Eco grinder.

PART NO.	SIZE	MAX RPM	ARBOR(S)	RECOMMENDED FOR	GRIT
VCS4535	4-1/2"	13,200	7/8"	Coating Removal	35
VCS453H	4-1/2"	13,200	5/8"-11	Coating Removal	35
VCS4550	4-1/2"	13,200	7/8"	Coating Removal	50
VCS455H	4-1/2"	13,200	5/8"-11	Coating Removal	50
VCS5035	5"	13,200	7/8"	Coating Removal	35
VCS503H	5"	12,200	5/8"-11	Coating Removal	35
VCS503Q	5"	12,200	Sq Arbor	Coating Removal	35
VCS5050	5"	12,200	7/8"	Coating Removal	50
VCS505H	5"	12,200	5/8"-11	Coating Removal	50
VCS7035	7"	8,400	7/8"	Coating Removal	35
VCS703H	7"	8,400	5/8"-11	Coating Removal	35
VCS7050	7"	8,400	7/8"	Coating Removal	50
VCS705H	7"	8,400	5/8"-11	Coating Removal	50

FEATURES

Open-mesh diamond layer for “clog-free” coating removal



close-up of diamonds

sandwich construction



VFLEX

The VFlex sanding disc is perfect for paint, coating, oxide and rust removal, grinding burr and chamfering on the edge of steel, stainless steel and contoured surfaces. The VFlex has a flexible, rubber-sandwiched cushion body that dramatically reduces unpleasant noise and vibrations. The disc follows the surface curve with ease as well as offers a long life and high-performance reducing downtime replacing tooling. The VFlex is also ideal to shape natural and engineered stones and glass. The VFlex sanding disc is available in 5" and 7" with 7/8" arbor or with 5/8"-11 zinc hub.

PART NO.	SIZE	MAX RPM	ARBOR(S)	RECOMMENDED FOR	GRIT
VDF5035	5"	5,000	7/8"	General Purpose	35
VDF503H	5"	5,000	5/8"-11	General Purpose	35
VDF5050	5"	5,000	7/8"	General Purpose	50
VDF505H	5"	5,000	5/8"-11	General Purpose	50
VDF5080	5"	5,000	7/8"	General Purpose	80
VDF508H	5"	5,000	5/8"-11	General Purpose	80
VDF7035	7"	5,000	7/8"	General Purpose	35
VDF703H	7"	5,000	5/8"-11	General Purpose	35
VDF7050	7"	5,000	7/8"	General Purpose	50
VDF705H	7"	5,000	5/8"-11	General Purpose	50
VDF7080	7"	5,000	7/8"	General Purpose	80
VDF708H	7"	5,000	5/8"-11	General Purpose	80



flexible sandwich construction

FEATURES

Cushioned to reduce noise and vibration

G-Tape



Features:

- Hand Tearing-Straight & Easy
- Residue Free Removal
- Waterproof
- All-Weather Usage (-40°F to +200°F)
- Repositionable
- Highly Weather/UV Resistant
- Good Surface Protection
- Great for Quick Repairs

PART NO.	COLOR	SIZE	RECOMMENDED FOR
GT1009GR	Green	2" x 163'	Multi-Purpose - All Surfaces
GT1008SW	White	2" x 163'	Extra UV Protection
GT1006TG	Black & Yellow	2" x 82'	Caution Areas
BAB0650	Black	6" x 164'	Large Surface Protection

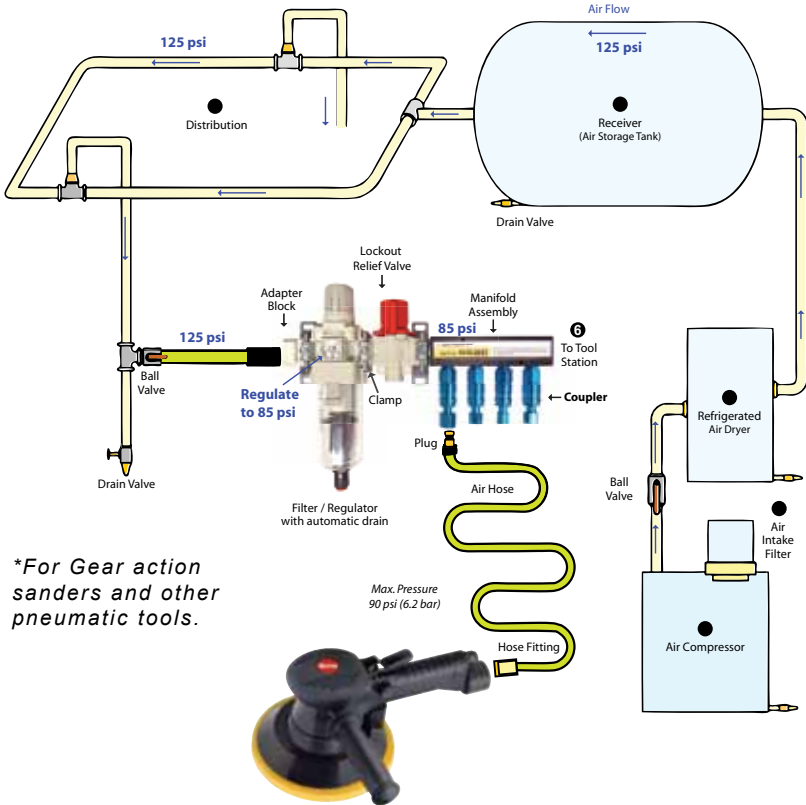
MULTI-PURPOSE APPLICATIONS



Filter/Regulator

MANIFOLD SYSTEM

Big return on a small investment!



**For Gear action sanders and other pneumatic tools.*

Eliminate potential issues with air systems and increase the life of the air tools!

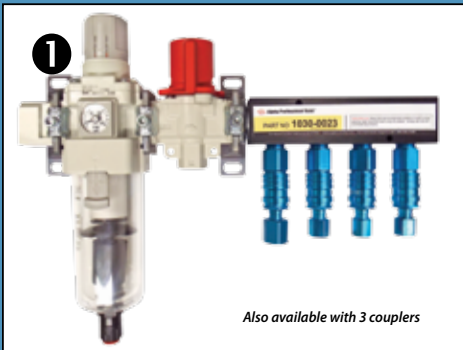
PART NO	SIZE	DESCRIPTION	COUPLERS	ADAPTER	PLUGS INCLUDED
1030-0021	53 CFM	3/8" Filter/Regulator Manifold	3	3/8" NPT	(3) 1/4" Female NPT
1030-0022	53 CFM	3/8" Filter/Regulator Manifold	3	1/2" NPT	(3) 1/4" Female NPT
1030-0023	106 CFM	1/2" Filter/Regulator Manifold	4	1/2" NPT	(3) 1/4" Female NPT + (1) 3/8" Female NPT
1030-0024	106 CFM	1/2" Filter/Regulator Manifold	4	3/4" NPT	(3) 1/4" Female NPT + (1) 3/8" Female NPT

Filter Regulator

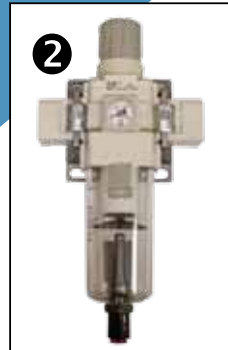


- Protects Your Tools From Contaminants
- Helps Prevent Pressure Drops When Using A Large Volume Of Air
- Adapts To The Existing Shop Piping and Increases The Life Of The Tools
- Makes It Easy To Get The Maximum Performance From Your Pneumatic Tools
- Comes in Two Sizes (53 CFM and 106 CFM)

Can be easily **CUSTOMIZED** to your shop requirements!



Also available with 3 couplers



PART NO	DESCRIPTION	CFM/SIZE
1030-1150	Filter/Regulator	53
1030-1151	Filter/Regulator	106
1030-1156	3/8" Modular piping adapter for F/R 1030-1150	3/8" NPT
1030-1166	1/2" Modular piping adapter for F/R 1030-1150	1/2" NPT
1030-1158	1/2" Modular piping adapter for F/R 1030-1151	1/2" NPT
1030-1159	3/4" Modular piping adapter for F/R 1030-1151	3/4" NPT
1030-1162	Modular T-clamp for F/R 1030-1150	—
1030-1164	Modular T-clamp for F/R 1030-1151	—

EXTREME ALL WEATHER FLEXIBILITY (-40° to +140°F)

Alpha® Adapter Hose Assembly



► FEATURES:

- Installs Directly to Supply Line
- Abrasion Resistant

NOTE: Adapter Hose Assembly is only available for Part No. 1030-0022 and 1030-0023 F/R Manifolds.

Alpha® Mobile Air Hose Assembly



► FEATURES:

- Installation Closer to Point-of Use
- Kink-Free
- No Memory- Lays Flat
- Abrasion Resistant

PART NO.	SIZE	DIAMETER	TYPE	RECOMMENDED FOR	THREADS
1030-0025	1ft./0.3m	1/2"	Adapter	Manifold	1/2" NPT Swivel
1030-0026	2ft./0.6m	1/2"	Adapter	Manifold	1/2" NPT Swivel
1030-0027	3ft./0.9m	1/2"	Adapter	Manifold	1/2" NPT Swivel
1030-0050	15ft./4.5m	1/2"	Mobile	Manifold	1/2" NPT Swivel w/Hose Protector
1030-0052	20ft./6.0m	1/2"	Mobile	Manifold	1/2" NPT Swivel w/Hose Protector
1030-0054	25ft./7.6m	1/2"	Mobile	Manifold	1/2" NPT Swivel w/Hose Protector
1030-0056	30ft./9.1m	1/2"	Mobile	Manifold	1/2" NPT Swivel w/Hose Protector
1030-0058	35ft./10.6m	1/2"	Mobile	Manifold	1/2" NPT Swivel w/Hose Protector
1030-0060	40ft./12.1m	1/2"	Mobile	Manifold	1/2" NPT Swivel w/Hose Protector

AIR & WATER HOSES - For Pneumatic and Electric Tools

► FEATURES:

- Superior bend radius
- Kink resistant under pressure
- Extreme all-weather flexibility, even in sub-zero temps
- Available in lengths of 15ft - 40ft (*call for custom lengths*)
- Diameters of 1/4" and 1/2"
- Connectors available in 1/8", 3/8" 1/4", 1/2" and 3/4"



Alpha® HEPA Wet/Dry Vacuum 15-Gal

ACCESSORIES

Complete HEPA vacuum system



- Designed for use on Non-Metallic Surfaces such as Wood, Plastic, Paint, Concrete and Other Natural and Engineered Stones
- Excellent for General Source Capture and Wet or Dry Cleanup
- 80" Water Lift
- 95 CFM Air Flow Rate
- Vacuum Starts Automatically With Startup of Tool Whether Electric or Pneumatic
- Heavy Duty Stainless Steel Canister With 15 Gallon (60 Liters) Capacity
- Include HEPA Filter to Remove Up to 0.3 Micron Particle at 99.95% Efficiency
- Equipped With Easy-Glide Cart
- 10 feet x 1-1/2 inch Crushproof Hose
- All Floor Cleaning Accessories Are Included
- Equipped With Cargo Basket for Tools and Consumables

PART NO.	SIZE	TYPE	DESCRIPTION
HWD1120	15-Gal	120V	HEPA Wet/Dry Vacuum
HWD1240	15-Gal	240V	HEPA Wet/Dry Vacuum



Recommended For:



Visit us on the web at www.alpha-tools.com to see a list of compatible grinders that can be used on the Ecoguard Type M

a.k.a. **SPARK BUSTER**

Warning: The Alpha® CarBite Blade can be used on high-speed angle grinders **ONLY** with Ecoguard Type M a.k.a. Spark Buster due to the safety regulations.

- Reduces Sparks
- Cuts Quick and Safely
- Smooth Operation

The Ecoguard Type M a.k.a. Spark Buster transforms your grinder into a multi-cutting saw that is in compliance with ANSI standards to safely use Metal Cutting Blades. When equipped with the Alpha® CarBite blade, the Ecoguard Type M offers a smooth cutting action that reduces the risk of kick-backs on hand-held grinders and increases the cutting speed for a stable application. This new system cuts angle iron, c-channel, conduit, schedule 40, spiral duct, galvanized roofing, metal studs, rebar, stainless steel, aluminum plates and bars, steel plates, threaded rods and unistrut.

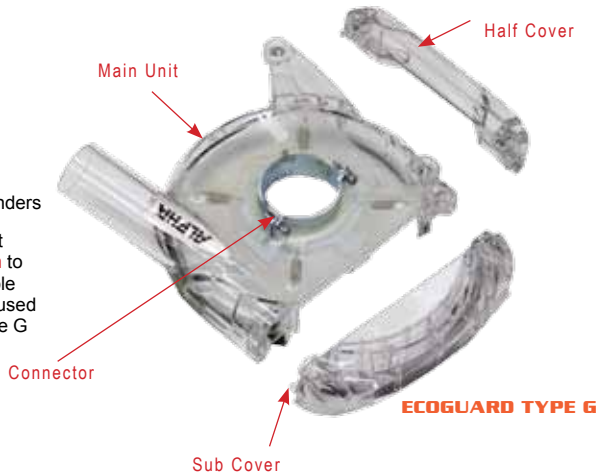
The proper peripheral speed is an essential part of the life of the CarBite blade. Alpha® recommends using the 4-1/2" CarBite blade on a Variable-Speed Angle Grinder at a lower speed (8,000rpm or lower). When using a 5" single-speed grinder, select the 4-1/2" blade to lower the peripheral speed.

The Alpha® CarBite Blade produces minimal sparks, debris and odor, therefore it is safer in the **Ex** ZONE and any other areas with clutter. Perfect for all your metal cutting needs!

- Cuts most Building Materials
- Fits most 4-1/2", 5" or 6" Angle Grinders
- Works with Abrasive Cut-Off Wheels Carbide and Diamond Blades

PART NO.	SIZE	THICKNESS	MAX. RPMs	RECOMMENDED RPMs 30% Lower	ARBOR(S)	DESCRIPTION
ECOGRDSB	—	—	—	—	—	Ecoguard Type M (Spark Buster)
TCT4530	4-1/2"	1.6mm	13,000	8,000	7/8"	CarBite Carbide Blade
TCT5030	5"	1.6mm	9,600	6,000	7/8"	Carbite Carbide Blade
ECOM45KIT	4-1/2"	1.6mm	13,000	8,000	7/8"	Ecoguard M/CarBite Blade Kit
ECOM50KIT	5"	1.6mm	9,600	6,000	7/8"	Ecoguard M/CarBite Blade Kit

Alpha® introduces a new Ecoguard designed for collecting dust when using a High-Speed Angle Grinder. The Ecoguard Type G is intended for use when grinding with discs up to 5" in diameter. It is made of high-quality construction for heavy-duty applications. This dust collection cover creates a virtually dust-free environment when connected to a vacuum. It also includes several connectors and spacers to easily allow for use on many common grinders.



- Fits most popular grinders
- Visit us on the web at www.alpha-tools.com to see a list of compatible grinders that can be used on the Ecoguard Type G

FEATURES

Suspended collar designed for maximum seal with replacement brushes

FLEXIBLE CONNECTOR HOSE



HEPA WET/DRY VACUUM

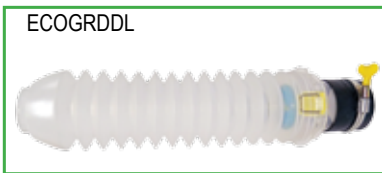
PART NO.	DESCRIPTION
ECOGRDGR	Ecoguard Dust Collection Cover Type G
500026	Flexible Connector Hose - 18"
ECOGKIT	Ecoguard G & Connector Hose Kit
HWD1120	Hepa Vacuum 15-gal 120V



The Alpha® Ecoguard Type D is a dust collection cover for drilling applications. This new innovative device helps to keep dust out of your face and off of the floor when drilling holes on walls and ceilings. The Ecoguard D captures the dust while leaving both hands free to drill. Since the dust cover is transparent, you can always see where you are drilling. Simply press the cover against the surface and drill away. Any dust or debris that results from the drilling is collected and can be easily emptied out when finished. The Ecoguard D makes jobs easier and saves the messy clean-up afterwards.



ECOGUARD TYPE D



FEATURES

- Collects Dust & Debris to Avoid the Mess
- Fits Most Popular Drills & Hammer Drills



PART NO.	SIZE	RECOMMENDED FOR	DESCRIPTION
ECOGRDDL	≥ 6"	Long Drill Bits	Ecoguard Dust Collection Cover Type DL
ECOGRDDS	≤ 6"	Short Drill Bits	Ecoguard Dust Collection Cover Type DS
803172	—	Use with Ecoguard Type D	Universal Handle for Hammer Drills

Rust Inhibitor Oil for Pneumatic Tools

The Alpha® AIR-008 is a rust inhibitor oil is used to protect the tool from rusting when not in use. How it Works: At the end of each workday, place 2-3 drops of rust inhibitor oil (included with each Alpha® Pneumatic Tool) directly into the oil port of the pneumatic tool. After applying the rust inhibitor oil, turn the air valve slightly so that the oil lubricates, or “atomizes” the internal components of the tool in the form of a mist. If the process is executed correctly, you should see a mist coming out of the end of the tool. See the tool manual for step-by-step instructions for the specific tool.



PART NO.	RECOMMENDED FOR	DESCRIPTION
AIR-008	Pneumatic Tools	Rust Inhibitor Oil 8oz (237ml)

ALPHA® QUAD ADAPTER - For Flush Cutting Blades with 4 holes



**QUAD ADAPTER
(Brass)**

The Alpha® Quad Adapter is specifically designed for flush cutting blades with four mounting holes. Made of durable high quality brass, the Alpha® Quad Adapter is easily mounted to any quad drive blade and is available in 5/8"-11, M10-1.25 and M14-2 thread sizes for any flush cutting application. The adapter comes with all necessary parts and is ready for immediate use.

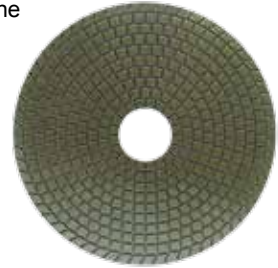


ALUMINUM ADAPTER

PART NO.	TYPE	THREAD
AAH-7/8	Aluminum Adapter	7/8" Thread/Quad Drive
AAH-20	Aluminum Adapter	20mm Thread/Quad Drive
BAH-5/8	Adapter	5/8"-11 Thread/Quad Drive
BAH-M10Q	Adapter	M10-1.25 Thread/Quad Drive
BAH-M14	Adapter	M14-2 Thread/Quad Drive



Alpha® Ceramica Resin is the best hand polishing pad for the sheet metal inspection at the steel mills. You can attach Ceramica Resin on your preferred hand pad using the hook & loop backing and then hand polish a small section of the steel to find roll marks and dents. The application is simple but is the back bone of a good quality control system for your steel fabrication.



CERAMICA RESIN

PART NO.	SIZE	MAX RPM	TYPE	GRIT / THREADS
GP50500R	5"	4,000	Hook & Loop	#500
GP55/8PD	5"	6,000	Flexible	5/8"-11
GP55/8RG	5"	6,000	Rigid	5/8"-11

ALPHA® Antique Brush Wheels - Brush Wheels for that Textured Finish



Create a stylish textured finish to your work piece by using the new Alpha® Antique Brushes. Developed with TYNEX® A filament from DuPont, to ensure safety and exceptional performance, these brushes are available in 4" and 5" sizes. They utilize a snail lock adapter (SFAT-5/8, PVA-5/8) and can be used on the most popular edge polishing machines, hand-held sanders and polishers. Both sizes are available in grits of #24, #36, #60, #120, #240 and #320 and can be used on Metal as well as all Natural and Engineered Stones!

ANTIQUÉ BRUSH



PART NO.	SIZE	MAX. RPM	TYPE	GRIT	BOND TYPE
AB4024	4"	4,000	Snail Lock	24	Resin
AB4036	4"	4,000	Snail Lock	36	Resin
AB4060	4"	4,000	Snail Lock	60	Resin
AB4120	4"	4,000	Snail Lock	120	Resin
AB4240	4"	4,000	Snail Lock	240	Resin
AB4320	4"	4,000	Snail Lock	320	Resin
PVA-5/8	4"	4,000	5/8"-11	—	Snail Lock Adapter
AB5024	5"	4,000	Snail Lock	24	Resin
AB5036	5"	4,000	Snail Lock	36	Resin
AB5060	5"	4,000	Snail Lock	60	Resin
AB5120	5"	4,000	Snail Lock	120	Resin
AB5240	5"	4,000	Snail Lock	240	Resin
AB5320	5"	4,000	Snail Lock	320	Resin
SFAT-5/8	5"	2,000	5/8"-11	—	Snail Lock Adapter



Alpha® PVA VP polishing disc is a dry polishing system used to polish stainless steel for a semi-mirror finish. Fast working and long lasting, the Alpha® PVA VP polishing disc is easy to use and works well on most common high-speed angle grinders, sanders and polishers. It can be used for other applications such as stone, ceramic, wood and other metals. In addition, it works great for paint, rust and coating removal, as the material will not clog. The Alpha® PVA VP polishing disc is formulated with a silicon carbide abrasive and a polyvinyl alcohol bond that is color-coded for ease of

operation. The combination of this bond and abrasive gives it a long life at an affordable price. The Alpha® PVA VP Polishing System is available with a straight 7/8" arbor or a 5/8"-11 disposable zinc hub for your convenience.

**PVA VP POLISHING DISC
WITHOUT HUB**



**PVA VP POLISHING DISC
WITH HUB**



PART NO.	SIZE	MAX RPM	ARBOR(S)	FINISH	GRIT
SPVA45W	4-1/2"	13,200	7/8"	EXTRA COARSE	40
SPVA45R	4-1/2"	13,200	7/8"	COARSE	80
SPVA45B	4-1/2"	13,200	7/8"	MEDIUM	220
SPVA45G	4-1/2"	13,200	7/8"	FINE	400
SPVA45Y	4-1/2"	13,200	7/8"	EXTRA FINE	600
SPVA45WH	4-1/2"	13,200	5/8"-11	EXTRA COARSE	40
SPVA45RH	4-1/2"	13,200	5/8"-11	COARSE	80
SPVA45BH	4-1/2"	13,200	5/8"-11	MEDIUM	220
SPVA45GH	4-1/2"	13,200	5/8"-11	FINE	400
SPVA45YH	4-1/2"	13,200	5/8"-11	EXTRA FINE	600

Alpha® Hand-Held Tools

Alpha Professional Tools® offers many hand-held tools for stone fabrication. Below are a few of the popular tools. For a complete list, or more information, please visit our website or the Hand Tooling catalog.

CUTTING

PSC-150

Powerful Pneumatic Stone Cutter



- 2 HP Pneumatic Powered Motor with Speed Governor
- Capable of Miter Cutting 1 1/4" Material With Ease
- Kink-Free Water & Air Hoses for Easy Maneuverability and Reducing Operator Fatigue
- Great For Sink-Hole Cutting, Groove Cutting and Rodding Applications
- Can Be Used Wet or Dry
- Comes With An Eclipse II 6" Blade

AWS-125

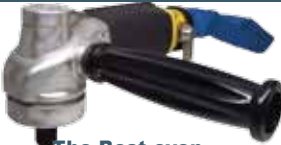
Powerful Wet Stone Cutter



- Produces Straight and True Cuts Everytime
- Most Powerful Motors in Its Class
- Powers Through Hard Dense Materials, Such as, Porcelain, Hard Red Granites and Engineered Stone
- Water-Feed Supply Eliminates the Harmful Dust Particles

GRINDING AND POLISHING

AIR-680



The Best even got Better with...

- High-Performance, Pneumatic Polishing Tool with a Central Water-Feed System
- 15ft. All-Weather Hoses with Flexibility Down to -40F (or +140F)
- Oil Port for easy lubrication
- Lightweight and Ergonomically Designed
- Consumes 15 CFM and requires 85 PSI

AIR-300



Mini Air Polisher!

- High-Performance, Pneumatic Polishing Tool with a Central Water-Feed System
- 15ft. All-Weather Hoses with Flexibility Down to -40F (Or +140F)
- Lightweight and Ergonomically Design Reduces Fatigue
- Designed to easily maneuver in small areas like Sink Rims and Bowls

VSP-320



Variable Speed Wet Polisher

- Variable Speed Range of 700 to 2,500 RPM
- Heavy Duty Gear System with Step-Down Transmission
- Powerful 7 Amp Motor
- 15ft. Flexible All-Weather Water Hose
- EasyOn EasyOff Sleeve Improves Maneuverability
- Center Water-Feed System

WDP-320



WDP-320 Wet/Dry Variable Speed Polisher

- Wet/Dry Hybrid Polisher with The Ecoguard G Attached for Tile Edge Polishing Without the Typical Mess
- Provides The Best Quality Polish On Concrete Countertop Surfaces When Used with Water, or a Vacuum
- Heavy Duty Gear System Includes a Step-Down Transmission
- Variable Speed Range Of 700 to 2,500 RPM
- 15ft. Water Hose is All-Weather Flexible & Kink-Free

INDEX

A

AIR-008 Rust Inhibitor Oil 26
Antique Brush Wheels 27

C

Ceramica Resin 27
COTE-04 1
COTR-03 2

E

Ecoguard
Type D 25
Type G 24
Type M 23

G

GDSA-06 6
GDSA-08 7
GDSP-05 8
G-Tape 18

H

HEPA Wet/Dry Vacuum 22
Hoses 21

M

Manifold System 19-20

P

PVA VP Polishing Disc 28

Q

Quad Adapters 26

R

Rescue Blade 18
Reznet
DA Backer Pads 12
Sanding Blocks 10
Sanding Screen Discs 13
Sanding Screen Rolls 11
ROPS-056 9

S

Spike 16

U

Ultracut
ABM Series 5
APR Series 4
GPM Series 3

V

Vexcel 14
Vextra 15
VFlex 17

Product Literature Catalogs

Alpha® provides product catalogs for all products to best serve the particular needs of our customers. Catalogs are available for applications such as Hand Tooling and Large Machine Tooling, as well as for specific industries such as concrete, automotive, industrial and composites.

All of our catalogs are a convenient portable of size 5.5" x 8.5", and illustrate the tools and accessories needed for Cutting, Profiling, Grinding, Drilling, Polishing and Restoring all types of materials.

To request these catalogs, or for more information about our product line, visit our website at www.alpha-tools.com or contact us at 800-648-7229



ALPHA® TOOL REPAIR

- Authorized repair centers available
- All tool repairs carry a 30-day warranty
- Quick turn-around time
- Technical support for repair and maintenance
- Order replacement tool parts directly from Alpha®
- Loaner program available



Eastern USA	Western USA
<p>Alpha Professional Tools® 103 Bauer Drive Oakland, New Jersey 07436 Phone #: (800) 648-7229 ext. 240 E-mail: tooldesk@alpha-tools.com</p>	<p>A1 Industrial & eReplacementParts.com 7036 South High Tech Drive Midvale, UT 84047 Phone #: 801-285-7232 E-mail: dale@ereplacementparts.com</p>



103 Bauer Drive • Oakland, NJ 07436
 800-648-7229 • Fax: 800-286-0114

www.alpha-tools.com

Copyright © 2017 Alpha Professional Tools. All rights reserved.

Ver. 4.0 - 06/17

