

ALPHA®

FOR **INNOVATIVE TOOLING**
COMPOSITE
APPLICATIONS



■ **Cost-Effective**

■ **User-Friendly**

■ **Productive**

■ **Safe**

Providing Better Solutions to the Professional

VERSION 1

COTE-04 - 4" PNEUMATIC EXTENDED CUT-OFF TOOL

► FEATURES:

- Built-in Spindle Lock
- Rear Exhaust
- Built-in Cushion Grip
- Push to Adjust Safety Guard
- 11 Position Adjustable Swivel Guard (126 Adjustable Range)
- Powerful Motor (1.0 HP/0.7KW)



► SPECIFICATIONS:

- Free Speed: 14,000 RPM
- Cutting Disc Dimensions: 4" (100mm) x 3/8" (10mm)
- Air Inlet: 1/4" NPT
- Hose Size ID: 3/8" (10mm)
- Air Consumption: 4 CFM (113L/min)
- Length: 14-3/4" (377mm)
- Weight: 3.7 lbs (1.7kg)
- Noise Level: 85 dB(A)
- Recommended Air Pressure: 90 PSI (6.2 Bar)

COTR-03 - 3" PNEUMATIC REVERSIBLE CUT-OFF TOOL

► FEATURES:

- Special Hub Allows for Left or Right Turning Cutting Action
- Collar Operated Easy Directional Change
- Safety Throttle Lever
- Rear Exhaust
- Powerful Motor (0.85HP/0.63 KW)



► SPECIFICATIONS:

- Free Speed: 20,000 RPM
- Cutting Disc Dimensions: 3" (75mm) x 3/8" (10mm)
- Air Inlet: 1/4" NPT
- Hose Size ID: 3/8" (10mm)
- Air Consumption: 4 CFM (113 L/min)
- Length: 8-1/16" (204mm)
- Weight: 2 lbs (0.9 kg)
- Noise Level: 83 dB(A)
- Recommended Air Pressure: 90 PSI (6.2 Bar)

GDSA-06 - 6" PNEUMATIC GEAR ACTION SANDER / POLISHER

► FEATURES:

- Low Speed High Torque
- Central Vacuum System
- Random Orbital Fine Polishing and Sanding
- Low Noise



► SPECIFICATIONS:

- Free Speed: 900 RPM
- Pad Size: 6" (152mm)
- Orbit Diameter: 3/16" (5mm)
- Air Inlet: 1/4" NPT
- Hose Size ID: 3/8" (10mm)
- Air Consumption: 3.5 CFM (99L/min)
- Length: 11-3/4" (300mm)
- Weight: 4.2 lbs (1.9kg)
- Noise Level: 84 dB(A)
- Recommended Air Pressure: 90 PSI (6.2 Bar)

GDSA-08 8" PNEUMATIC GEAR ACTION SANDER / POLISHER

► FEATURES:

- Low Speed High Torque
- Central Vacuum System
- Random Orbital Fine Polishing and Sanding
- Low Noise



► SPECIFICATIONS:

- Free Speed: 900 RPM
- Pad Size: 8" (203mm)
- Orbit Diameter: 3/16" (5mm)
- Air Inlet: 1/4" NPT
- Hose Size ID: 3/8" (10mm)
- Air Consumption: 3.5 CFM (99L/min)
- Length: 12-3/8" (315mm)
- Weight: 4.4 lbs (2.0kg)
- Noise Level: 84 dB(A)
- Recommended Air Pressure: 90 PSI (6.2 Bar)

GDSP-05 - 5" PNEUMATIC GEAR ACTION SANDER/POLISHER

► FEATURES:

- One or Two-Handed Operation
- Low Speed High Torque
- Random ORbital Fine Polishing and Sanding
- Lightweight
- Low Noise



► SPECIFICATIONS:

- Free Speed: 1,300 RPM
- Pad Size: 5" (125mm)
- Orbit Diameter: 3/16" (5mm)
- Air Inlet: 1/4" NPT
- Hose Size ID: 3/8" (10mm)
- Air Consumption: 3 CFM (85L/min)
- Length: 10" (254mm)
- Weight: 2.2 lbs (1.0kg)
- Noise Level: 84 dB(A)
- Recommended Air Pressure: 90 PSI (6.2 Bar)

ROPS-056 - 6" PNEUMATIC PALM SANDER

► FEATURES:

- Composite Motor Housing
- Well-Balanced Design
- Low Vibration
- Lightweight
- Low Noise
- Central Vacuum System



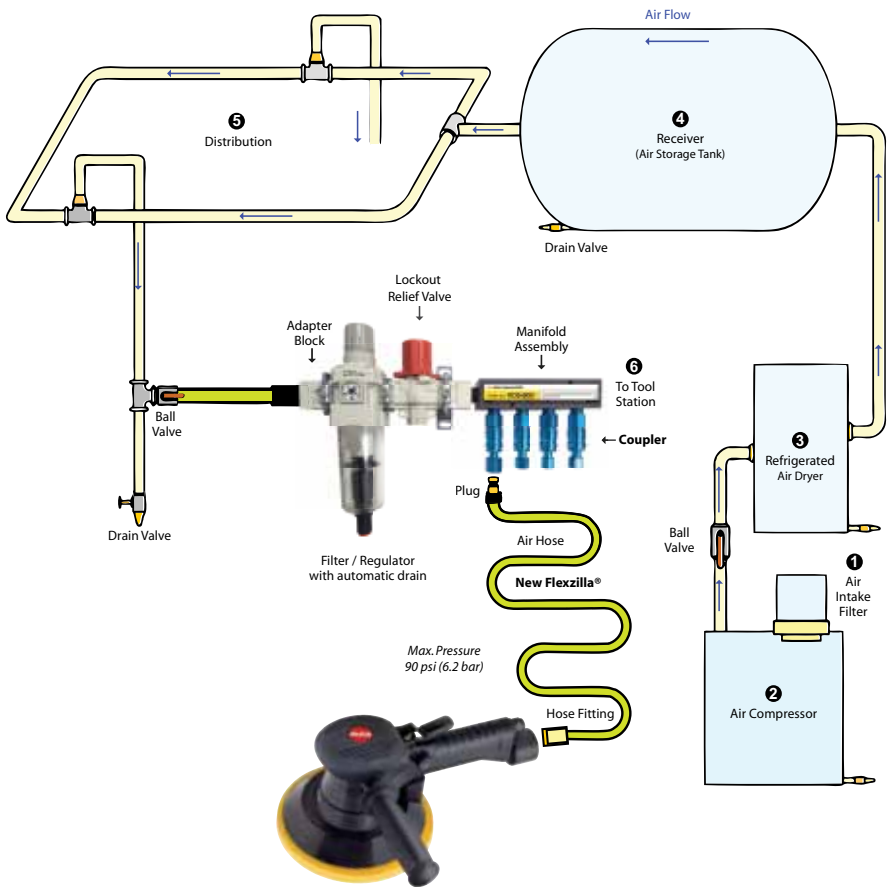
► SPECIFICATIONS:

- Max. Free Speed: 12,000 RPM
- Pad Size: 6" (150mm)
- Orbit Diameter: 3/16" (5mm)
- Spindle Thread: 5/16"-24
- Air Inlet: 1/4" NPT
- Hose Size ID: 3/8" (10mm)
- Air Consumption: 2 CFM (57L/min)
- Length: 7-3/4" (196mm)
- Weight: 1.5 lbs (0.7kg)
- Noise Level: 76 dB(A)
- Recommended Air Pressure: 90 PSI (6.2 Bar)

Filter/Regulator

MANIFOLD SYSTEM

Big return on a small investment!



Eliminate potential issues with air systems and increase the life of the air tools!

MANIFOLD SYSTEM - Filter Regulator

INCREASES THE LIFE OF AIR TOOLS

In a proactive step for pneumatic tool longevity, Alpha® has created Filter/Regulator (F/R) manifold systems to help eliminate potential issues caused by rust or contamination in the pipes or connectors feeding the pneumatic tools.

The Filter/Regulator also helps prevent pressure drops when using a large volume of air, so the pressure can be set on the tools at 85 PSI, while the main system can run at 125 PSI.

The systems, which comes in two sizes (53 CFM & 106 CFM), consist of a Filter/Regulator with a shut off/dump valve, and an aluminum manifold with three or more aluminum quick disconnects. The Alpha® F/R Manifold System and is designed for installation at the point of use and is configured to adapt to the existing shop piping and increase the life of the tools.

Keep your system clean and get the maximum performance from your pneumatic tools!



This F/R assembly has a 3/8" air passageway and is capable of 53 CFM. It's equipped with three 1/4" NPT couplers and three 1/4" NPT female plugs.



This F/R assembly has a 1/2" air passageway and is capable of 106 CFM. It's equipped with four 3/8" NPT couplers, one 3/8" NPT female plug and three 1/4" NPT female plugs.

PART NO	SIZE	DESCRIPTION	COUPLERS	ADAPTER	PLUGS INCLUDED
1030-0021	53 CFM	3/8" Filter/Regulator Manifold	3	3/8" NPT	(3) 1/4" Female NPT
1030-0022	53 CFM	3/8" Filter/Regulator Manifold	3	1/2" NPT	(3) 1/4" Female NPT
1030-0023	106 CFM	1/2" Filter/Regulator Manifold	4	1/2" NPT	(3) 1/4" Female NPT + (1) 3/8" Female NPT
1030-0024	106 CFM	1/2" Filter/Regulator Manifold	4	3/4" NPT	(3) 1/4" Female NPT + (1) 3/8" Female NPT

ALPHA® HOSES Adapter and Mobile Hose Assembly

EXTREME ALL WEATHER FLEXIBILITY (-40° to +140°F)

Alpha® Adapter Hose Assembly



► FEATURES:

- Installs Directly to Supply Line
- Abrasion Resistant

NOTE: Adapter Hose Assembly is only available for Part No. 1030-0022 and 1030-0023 F/R Manifolds.

Alpha® Mobile Air Hose Assembly



► FEATURES:

- Installation Closer to Point-of Use
- Kink-Free
- No Memory- Lays Flat
- Abrasion Resistant

PART NO.	DESCRIPTION	SIZE	HOSE FITTINGS
1030-0025	Adapter Hose Assembly	1ft / 0.30m	1/2" NPT Swivel
1030-0026	Adapter Hose Assembly	2ft / 0.60m	1/2" NPT Swivel
1030-0054	Adapter Hose Assembly	3ft / 0.90m	1/2" NPT Swivel
1030-0050	Mobile Air Hose Assembly	15ft / 4.5m	1/2" NPT Swivel with Hose Protector
1030-0052	Mobile Air Hose Assembly	20ft / 6.0m	1/2" NPT Swivel with Hose Protector
1030-0054	Mobile Air Hose Assembly	25ft / 7.6m	1/2" NPT Swivel with Hose Protector
1030-0056	Mobile Air Hose Assembly	30ft / 9.0m	1/2" NPT Swivel with Hose Protector
1030-0058	Mobile Air Hose Assembly	35ft / 10.6m	1/2" NPT Swivel with Hose Protector
1030-0060	Mobile Air Hose Assembly	40ft / 12.19m	1/2" NPT Swivel with Hose Protector

FLEXZILLA® Premium Hybrid Polymer Air Hose

3/8" - EXTREME FLEXIBILITY

► FEATURES:

- Superior bend radius
- Kink resistant under pressure
- Extreme all-weather flexibility, even in sub-zero temps
- Max working pressure: 300 psi
- Thread: 1/4" MNPT



PART NO.	HOSE LENGTH	HOSE I.D.	HOSE FITTINGS
FPA3825	25ft / 7.6m	3/8 in.	1/4 in. MNPT
FPA3850	50ft / 15.24 m	3/8 in.	1/4 in. MNPT

HEPA DRY VACUUM 10-GAL...DRY USE ONLY

CERTIFIED HEPA VACUUM

Equipped with a powerful 2-hp motor and an extra large capacity HEPA filter system, the HEPADV10 Dry Vacuum offers the air flow efficiency of vacuums costing three times as much. The certified HEPADV10 is manufactured to the same high quality standards as you expect from Alpha®. It includes a high-efficiency 'Drop-in' style HEPA filter individually certified to have a minimum efficiency of 99.97% at .3 microns (based on 1EST-RP-CC007 particle count test method).

OTHER FEATURES INCLUDE:

- A 'never-clog' dacron bag for superior pre-filtration
- Blow molded poly canister with low center of gravity design prevents tipping
- Positive locking, full swivel hose connection system for easy handling and operation
- Low noise allows for use in sound sensitive areas.
- Includes complete set of tools
- 50 foot power cord
- 3 labels to choose from: HEPA, Asbestos and Lead
- Automatic start with tool triggered control
- 10 ft. x 1.5 in. crushproof hose
- 105" Water Lift
- 110 CFM

OPTIONAL FLOOR CLEANING KIT

- 5 ft. two-piece metal wand
- 17 in. crevice tool
- Floor brush tool
- Round dusting brush



FLOOR CLEANING KIT



HEPADV10

PART NO.	DESCRIPTION
HEPADV10	HEPA Dry Vacuum 10-Gal
HEPA10KIT	HEPA Vacuum 10-Gal / Accessories Kit
HEP100511	Floor Cleaning Kit
HEP100483	HEPA Filter Assembly
HEP777510	HEPA Paper Bag (10pk)

REZNET Sanding Blocks

HAND SANDING AT ITS BEST



The Alpha® Reznet Sanding Blocks are designed with comfort in mind for the longest and toughest jobs. Along with Alpha® HEPA Vacuum, the Sanding Block performs a virtually dust-free application and ensures a cool sanding application. Alpha® currently offers three popular sizes for the hand sanding and polishing application. See Alpha® Reznet Sanding Screen Pads for availability of grits.

REZNET SANDING BLOCKS



PART NO.	SIZE	TYPE	BOND TYPE
RB275005	5" x 2-3/4" (125mm x 70mm)	Hook & Loop Block	Hard
RB275008	8" x 2-3/4" (200mm x 70mm)	Hook & Loop Block	Hard
RB275016	16" x 2-3/4" (400mm x 70mm)	Hook & Loop Block	Hard
VH91100	3/4" x 157-1/2" (20mm x 4m)	Mirka® Hose for Sanding Blocks	

FEATURES

Available in Popular Sizes; Comes with a Valve and Adapter!

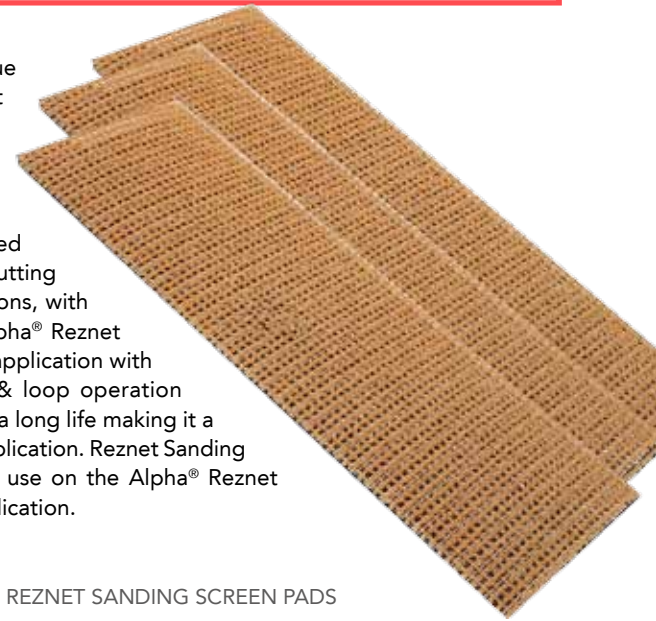


HEPA DRY VACUUM

REZNET Sanding Screen Pads

GENERAL PURPOSE SANDING PADS

The Alpha® Reznet is a unique multi-purpose sanding product made with a combination of high-quality abrasive grit, a nylon net and a hook & loop backing to remove dust from cutting surfaces. This advanced construction maintains cool cutting during the toughest applications, with difficult to sand materials. Alpha® Reznet provides a virtually dust-free application with the convenience of a hook & loop operation that ensures fast sanding and a long life making it a very cost-effective sanding application. Reznet Sanding Screen Pads are designed to use on the Alpha® Reznet Sanding Block for a hand application.



REZNET SANDING SCREEN PADS



PART NO.	SIZE	TYPE	GRIT	QTY	BOND TYPE
RP050040	5" x 2-3/4" (125mm x 70mm)	Hook & Loop	40	50	Aluminum Oxide
RP050080	5" x 2-3/4" (125mm x 70mm)	Hook & Loop	80	50	Aluminum Oxide
RP050120	5" x 2-3/4" (125mm x 70mm)	Hook & Loop	120	50	Aluminum Oxide
RP050180	5" x 2-3/4" (125mm x 70mm)	Hook & Loop	180	50	Aluminum Oxide
RP050240	5" x 2-3/4" (125mm x 70mm)	Hook & Loop	240	50	Aluminum Oxide
RP050320	5" x 2-3/4" (125mm x 70mm)	Hook & Loop	320	50	Aluminum Oxide
RP050400	5" x 2-3/4" (125mm x 70mm)	Hook & Loop	400	50	Aluminum Oxide
RP080040	8" x 2-3/4" (200mm x 70mm)	Hook & Loop	40	50	Aluminum Oxide
RP080080	8" x 2-3/4" (200mm x 70mm)	Hook & Loop	80	50	Aluminum Oxide
RP080120	8" x 2-3/4" (200mm x 70mm)	Hook & Loop	120	50	Aluminum Oxide
RP080180	8" x 2-3/4" (200mm x 70mm)	Hook & Loop	180	50	Aluminum Oxide
RP080240	8" x 2-3/4" (200mm x 70mm)	Hook & Loop	240	50	Aluminum Oxide
RP080320	8" x 2-3/4" (200mm x 70mm)	Hook & Loop	320	50	Aluminum Oxide
RP080400	8" x 2-3/4" (200mm x 70mm)	Hook & Loop	400	50	Aluminum Oxide
RP160040	16" x 2-3/4" (400mm x 70mm)	Hook & Loop	40	50	Aluminum Oxide
RP160080	16" x 2-3/4" (400mm x 70mm)	Hook & Loop	80	50	Aluminum Oxide
RP160120	16" x 2-3/4" (400mm x 70mm)	Hook & Loop	120	50	Aluminum Oxide
RP160180	16" x 2-3/4" (400mm x 70mm)	Hook & Loop	180	50	Aluminum Oxide
RP160240	16" x 2-3/4" (400mm x 70mm)	Hook & Loop	240	50	Aluminum Oxide
RP160320	16" x 2-3/4" (400mm x 70mm)	Hook & Loop	320	50	Aluminum Oxide
RP160400	16" x 2-3/4" (400mm x 70mm)	Hook & Loop	400	50	Aluminum Oxide

REZNET DA Backer Pads

CREATIVE DUST COVER WITH SMART MOUNTING SYSTEM



The Alpha® Reznet DA Sanding Backer Pads are industrial quality pads for the toughest jobs by the professional. They are designed for not only for Alpha® Reznet Discs, but also for standard abrasive products with a hook & loop system. Along with Alpha® HEPA Vacuum, the Reznet DA Dual-Action Sanding Backer Pad performs a virtually dust-free application to ensure a cool sanding application. Alpha® currently offers 5" for the most popular, electric dual-action sanders and a 6" for both electric and pneumatic dual-action sanders.



REZNET DA BACKER PAD



Changeable hardware to match conventional Pneumatic Sander and Festool® Sander.



HEPA DRY VACUUM

FEATURES

Creative Dust Cover Design; Smart Mounting System for Festool, Rupes & Makita Sanders; PUR-Molded for Premium Durability and Flexibility!

PART NO.	SIZE	THICKNESS	MAXIMUM RPM	TYPE	THREADS	DESCRIPTION
RDA50010	5" (125mm)	12mm	12,000	Medium	Makita® /Porter-Cable	Pattern 8+8+1
RDA60516	6" (150mm)	12mm	12,000	Medium	5/16"	Pattern 8+8+1
RDA60517	6" (150mm)	12mm	12,000	Medium	5/16"	Pattern 8+6/8+1
RDA68516	6" (150mm)	12mm	12,000	Medium	M8+5/16"	Pattern 8+8+1
RDA68517	6" (150mm)	12mm	12,000	Medium	M8+5/16"	Pattern 8+6/8+1

REZNET Sanding Screen Discs

VIRTUALLY DUST-FREE SANDING, MESH DISCS

The Alpha® Reznets are a unique multi-purpose sanding product made with a combination of high-quality abrasive grit, a nylon net and a hook & loop backing to remove dust from cutting surfaces. This advanced construction maintains cool cutting during the toughest applications, with difficult to sand materials. Alpha® Reznets provides a virtually dust-free application with the convenience of a hook & loop operation that ensures fast sanding and a long life making it a very cost-effective sanding application. Reznets Sanding Screen Discs are designed for Dual Action/Orbital Action/Gear Action Sanders as well as hand pads for the manual application.



PART NO.	SIZE	TYPE	GRIT	QTY	BOND TYPE
RA500040	5"	Hook & Loop	40	50	Aluminum Oxide
RA050080	5"	Hook & Loop	80	50	Aluminum Oxide
RA050120	5"	Hook & Loop	120	50	Aluminum Oxide
RA050180	5"	Hook & Loop	180	50	Aluminum Oxide
RA050240	5"	Hook & Loop	240	50	Aluminum Oxide
RA050320	5"	Hook & Loop	320	50	Aluminum Oxide
RA050400	5"	Hook & Loop	400	50	Aluminum Oxide
RA500600	5"	Hook & Loop	600	50	Aluminum Oxide
RA501000	5"	Hook & Loop	1000	50	Aluminum Oxide
RA501200	5"	Hook & Loop	1200	50	Aluminum Oxide
RA501500	5"	Hook & Loop	1500	50	Aluminum Oxide
RA502000	5"	Hook & Loop	2000	50	Aluminum Oxide
RA060040	6"	Hook & Loop	40	50	Aluminum Oxide
RA060080	6"	Hook & Loop	80	50	Aluminum Oxide
RA060120	6"	Hook & Loop	120	50	Aluminum Oxide
RA060180	6"	Hook & Loop	180	50	Aluminum Oxide
RA060240	6"	Hook & Loop	240	50	Aluminum Oxide
RA060320	6"	Hook & Loop	320	50	Aluminum Oxide
RA060400	6"	Hook & Loop	400	50	Aluminum Oxide
RA600600	6"	Hook & Loop	600	50	Aluminum Oxide
RA601000	6"	Hook & Loop	1000	50	Aluminum Oxide
RA601200	6"	Hook & Loop	1200	50	Aluminum Oxide
RA601500	6"	Hook & Loop	1500	50	Aluminum Oxide
RA602000	6"	Hook & Loop	2000	50	Aluminum Oxide
RA900060	9"	Hook & Loop	60	50	Aluminum Oxide
RA900100	9"	Hook & Loop	100	50	Aluminum Oxide
RA900120	9"	Hook & Loop	120	50	Aluminum Oxide
RA900150	9"	Hook & Loop	150	50	Aluminum Oxide
RA900180	9"	Hook & Loop	180	50	Aluminum Oxide



FEATURES

Available in 5" & 6" with Aluminum Oxide; Unique Hook & Loop System for Convenient Operation!

VEXCEL Diamond Grinding Disc — TYPE 29

MAXIMUM PERFORMANCE GRINDING DISC



The Vexcel is designed for heavy duty material removal applications whether it is cast iron, steel, stainless steel, non-ferrous metals, metal alloys, carbon fiber reinforcement plastic (CFRP), glass fiber reinforcement plastic (GFRP), natural and engineered stones. The Rigid steel base with a curved design creates a very aggressive grinding action and the fluoric rubber backing reduces noise and vibration. It minimizes sparking so you can avoid toxic air and pollution. The Vexcel has heavy duty multi-layers of diamond grits to ensure aggressive material removal and the longest life. The Vexcel grinding disc is highly recommended for grinding of cast iron and welding beam. Vexcel grinding disc is available in 4.5", 5" and 7" with a 7/8" arbor or a 5/8"-11 zinc hub.



VEXCEL

FEATURES

Rubber backing to reduce noise and vibration



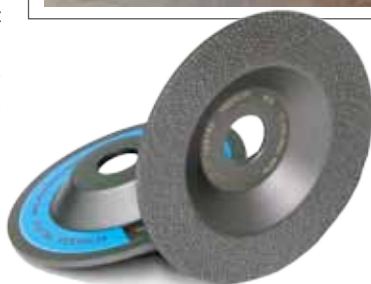
rubber

PART NO.	SIZE	MAX RPM	ARBOR	RECOMMENDED FOR	GRIT
VDR4525	4-1/2"	13,200	7/8"	General Purpose	25
VDR452H	4-1/2"	13,200	5/8"-11	General Purpose	25
VDR4535	4-1/2"	13,200	7/8"	General Purpose	35
VDR453H	4-1/2"	13,200	5/8"-11	General Purpose	35
VDR4550	4-1/2"	13,200	7/8"	General Purpose	50
VDR455H	4-1/2"	13,200	5/8"-11	General Purpose	50
VDR4580	4-1/2"	13,200	7/8"	General Purpose	80
VDR458H	4-1/2"	13,200	5/8"-11	General Purpose	80
VDR5025	5"	12,200	7/8"	General Purpose	25
VDR502H	5"	12,200	5/8"-11	General Purpose	25
VDR5035	5"	12,200	7/8"	General Purpose	35
VDR503H	5"	12,200	5/8"-11	General Purpose	35
VDR5050	5"	12,200	7/8"	General Purpose	50
VDR505H	5"	12,200	5/8"-11	General Purpose	50
VDR5080	5"	12,200	7/8"	General Purpose	80
VDR508H	5"	12,200	5/8"-11	General Purpose	80
VDR7025	7"	8,400	7/8"	General Purpose	25
VDR702H	7"	8,400	5/8"-11	General Purpose	25
VDR7035	7"	8,400	7/8"	General Purpose	35
VDR703H	7"	8,400	5/8"-11	General Purpose	35
VDR7050	7"	8,400	7/8"	General Purpose	50
VDR705H	7"	8,400	5/8"-11	General Purpose	50
VDR7080	7"	8,400	7/8"	General Purpose	80
VDR708H	7"	8,400	5/8"-11	General Purpose	80

VEXTRA Flat Diamond Grinding Disc — TYPE 27

COVER MORE AREA WITH A FLAT GRINDING DISC

Designed to grind steel, stainless steel and non-ferrous metals for the *Ex* ZONE where spark reduction is a priority. The Vextra is great for removing rust, burrs, mill scale, paint on metal surface as well as epoxy, glues and adhesives without clogging the grinding surface. The sandwich construction with rubber makes the grinding disc light, reduces vibration and noise to reduce fatigue of an operator. The Vextra has an optimized diamond grit and layer arrangement offering a long life and consistent performance without downtime. You can maximize the disc coverage by grinding flat to improve productivity and efficiency. The Vextra grinding disc can be used on natural stones, engineered stone/quartz surface, wood and rubber and is available in 4.5", 5" and 7" with a 7/8" arbor or a 5/8"-11 zinc hub.

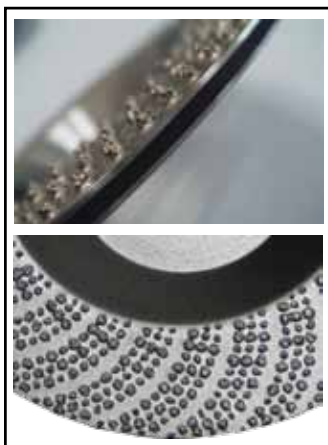


VEXTRA

FEATURES

Designed to work on flat surfaces for maximum coverage

sandwich construction



open-mesh

PART NO.	SIZE	MAX RPM	ARBOR	RECOMMENDED FOR	GRIT
VDD4535	4-1/2"	13,200	7/8"	General Purpose	35
VDD453H	4-1/2"	13,200	5/8"-11	General Purpose	35
VDD4550	4-1/2"	13,200	7/8"	General Purpose	50
VDD455H	4-1/2"	13,200	5/8"-11	General Purpose	50
VDD4580	4-1/2"	13,200	7/8"	General Purpose	80
VDD458H	4-1/2"	13,200	5/8"-11	General Purpose	80
VDD5035	5"	12,200	7/8"	General Purpose	35
VDD503H	5"	12,200	5/8"-11	General Purpose	35
VDD5050	5"	12,200	7/8"	General Purpose	50
VDD505H	5"	12,200	5/8"-11	General Purpose	50
VDD5080	5"	12,200	7/8"	General Purpose	80
VDD508H	5"	12,200	5/8"-11	General Purpose	80
VDD7035	7"	8,400	7/8"	General Purpose	35
VDD703H	7"	8,400	5/8"-11	General Purpose	35
VDD7050	7"	8,400	7/8"	General Purpose	50
VDD705H	7"	8,400	5/8"-11	General Purpose	50
VDD7080	7"	8,400	7/8"	General Purpose	80
VDD708H	7"	8,400	5/8"-11	General Purpose	80

SPIKE Diamond Disc
 COATING REMOVAL AT ITS BEST!



SPIKE

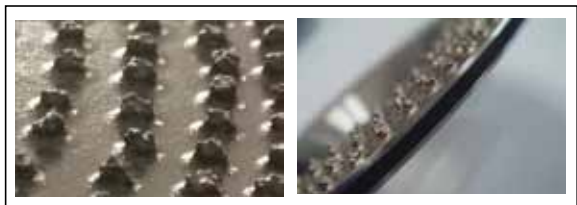
Patented technology makes this unique product available for “Clog-Free” coating removal for epoxy, urethane, glue and adhesives for surface preparation. An Open-mesh diamond layer removes debris fast avoiding heat buildup. Each diamond bead was made with multiple diamond grits to maintain a sharp cutting capability for a long time. The Spike Disc has a sandwiched-rubber cushioned light-weight body that reduces noise and vibration, so that operator can work for longer periods of time. Spike Disc is available in 4.5”, 5” and 7” with a 7/8” arbor or a 5/8”-11 zinc hub.

This Disc is also available with a square arbor that fits the Spring Load System on the Alpha® Ecogrinder.

PART NO.	SIZE	MAX RPM	ARBOR	RECOMMENDED FOR	GRIT
VCS4535	4-1/2"	13,200	7/8"	Coating Removal	35
VCS453H	4-1/2"	13,200	5/8"-11	Coating Removal	35
VCS4550	4-1/2"	13,200	7/8"	Coating Removal	50
VCS455H	4-1/2"	13,200	5/8"-11	Coating Removal	50
VCS5035	5"	13,200	7/8"	Coating Removal	35
VCS503H	5"	12,200	5/8"-11	Coating Removal	35
VCS503Q	5"	12,200	Sq Arbor	Coating Removal	35
VCS5050	5"	12,200	7/8"	Coating Removal	50
VCS505H	5"	12,200	5/8"-11	Coating Removal	50
VCS7035	7"	8,400	7/8"	Coating Removal	35
VCS703H	7"	8,400	5/8"-11	Coating Removal	35
VCS7050	7"	8,400	7/8"	Coating Removal	50
VCS705H	7"	8,400	5/8"-11	Coating Removal	50

FEATURES

Open-mesh diamond layer for “clog-free” coating removal



close-up of diamonds

sandwich construction

VFLEX Flexible Sanding Disc

GENERAL PURPOSE FLEXIBLE SANDING DISC



VFLEX

The VFlex sanding disc is perfect for paint, coating, oxide and rust removal, grinding burr and chamfering on the edge of steel, stainless steel and contoured surfaces. The VFlex has a flexible, rubber-sandwiched cushion body that dramatically reduces unpleasant noise and vibrations. The disc follows the surface curve with ease as well as offers a long life and high-performance reducing downtime replacing tooling. The VFlex is also ideal to shape natural and engineered stones and glass. The VFlex sanding disc is available in 5" and 7" with 7/8" arbor or with 5/8"-11 zinc hub.

PART NO.	SIZE	MAX RPM	ARBOR	RECOMMENDED FOR	GRIT
VDF5035	5"	5,000	7/8"	General Purpose	35
VDF503H	5"	5,000	5/8"-11	General Purpose	35
VDF5050	5"	5,000	7/8"	General Purpose	50
VDF505H	5"	5,000	5/8"-11	General Purpose	50
VDF5080	5"	5,000	7/8"	General Purpose	80
VDF508H	5"	5,000	5/8"-11	General Purpose	80
VDF7035	7"	5,000	7/8"	General Purpose	35
VDF703H	7"	5,000	5/8"-11	General Purpose	35
VDF7050	7"	5,000	7/8"	General Purpose	50
VDF705H	7"	5,000	5/8"-11	General Purpose	50
VDF7080	7"	5,000	7/8"	General Purpose	80
VDF708H	7"	5,000	5/8"-11	General Purpose	80



FEATURES

Cushioned to reduce noise and vibration

ECOGUARD TYPE M a.k.a. Spark Buster for Metal Cutting

TRANSFORMS A GRINDER TO MULTI-CUTTING SAW



Recommended For:



The Ecoguard Type M a.k.a. Spark Buster transforms your grinder into a multi-cutting saw that is in compliance with ANSI standards to safely use Metal Cutting Blades. When equipped with the Alpha® CarBite blade, the Ecoguard Type M offers a smooth cutting action that reduces the risk of kick-backs on hand-held grinders and increases the cutting speed for a stable application. This new system cuts angle iron, c-channel, conduit, schedule 40, spiral duct, galvanized roofing, metal studs, rebar, stainless steel, aluminum plates and bars, steel plates, threaded rods and unistrut.

The proper peripheral speed is an essential part of the life of the CarBite blade. Alpha® recommends using the 4-1/2" CarBite blade on a Variable-Speed Angle Grinder at a lower speed (8,000rpm or lower). When using a 5" single-speed grinder, select the 4-1/2" blade to lower the peripheral speed.

Visit us on the web at www.alpha-tools.com to see a list of compatible grinders that can be used on the Ecoguard Type M

a.k.a. **SPARK BUSTER**

Warning: The Alpha® CarBite Blade can be used on high-speed angle grinders **ONLY** with Ecoguard Type M a.k.a. Spark Buster due to the safety regulations.

- Reduces Sparks
- Cuts Quick and Safely
- Smooth Operation
- Cuts most Building Materials
- Fits most 4-1/2", 5" or 6" Angle Grinders
- Works with Abrasive Cut-Off Wheels Carbide and Diamond Blades

The Alpha® CarBite Blade produces minimal sparks, debris and odor, therefore it is safer in the **Ex** ZONE and any other areas with clutter. Perfect for all your metal cutting needs!

PART NO.	SIZE	THICKNESS	MAX. RPMs	RECOMMENDED RPMs 30% Lower	ARBOR(s)	DESCRIPTION
ECOGRDSB	—	—	—	—	—	Ecoguard Type M (Spark Buster)
TCT4530	4-1/2"	1.6mm	13,000	8,000	7/8"	CarBite Carbide Blade
TCT5030	5"	1.6mm	9,600	6,000	7/8"	Carbite Carbide Blade
ECOM45KIT	4-1/2"	1.6mm	13,000	8,000	7/8"	Ecoguard M/CarBite Blade Kit
ECOM50KIT	5"	1.6mm	9,600	6,000	7/8"	Ecoguard M/CarBite Blade Kit

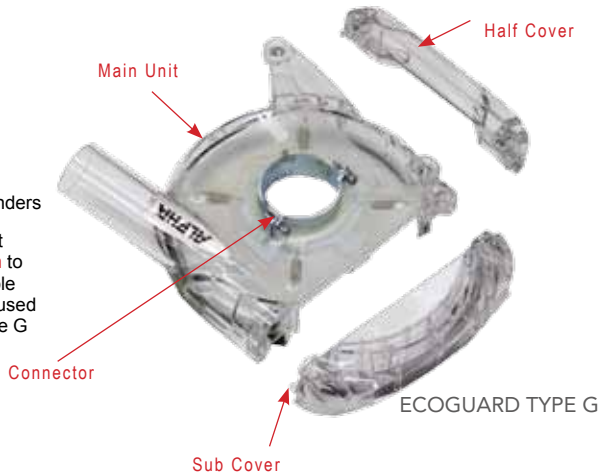
ECOGUARD TYPE G Dust Collection Cover for Grinding

ELIMINATES DUST WHILE GRINDING

Alpha® introduces a new Ecoguard designed for collecting dust when using the Alpha® HSG-125 or other High-Speed Angle Grinders. The Ecoguard Type G is intended for use when grinding with discs up to 5" in diameter. It is made of high-quality construction for heavy-duty applications. This dust collection cover creates a virtually dust-free environment when connected to a vacuum. It also includes several connectors and spacers to easily allow for use on many common grinders.



- Fits most popular grinders
- Visit us on the web at www.alpha-tools.com to see a list of compatible grinders that can be used on the Ecoguard Type G



FEATURES

Suspended collar designed for maximum seal with replacement brushes

FLEXIBLE CONNECTOR HOSE



HEPA DRY VACUUM

PART NO.	DESCRIPTION
ECOGRDGR	Ecoguard Dust Collection Cover Type G
500026	Flexible Connector Hose - 18"
ECOGKIT	Ecoguard G & Connector Hose Kit
HEPADV10	HEPA Dry Vacuum 10-Gal

ULTRACUT - GPM Series

THE ULTIMATE VACUUM BRAZED DIAMOND BLADE



The Alpha® Ultracut GPM Series is made for building contractors and fabricators who work with metal and composite materials. The GPM Series blade fits on most popular hand-held electric power tools for demanding metal applications. Cut galvanized steel roofing sheets and corrugated granite granule coated metal roof tile, easily with a worm-drive saw without worrying about carbide tip loss, compression marks and burning of paint. Since the Alpha® Ultracut maintains excellent cutting performance at the maximum cutting depth throughout its life, iron workers and underwater welders will appreciate using this blade. The Ultracut GPM Series cuts angle iron, pipe, electrical conduit, re-bar, metal stud, structural metal, sheet metal, grid, and stainless steel along with wood, plastics, composite materials, masonry and concrete.



GPM Series

FEATURES

Fits most popular High-speed Angle Grinders and Circular Saws.

PART NO.	SIZE	THICKNESS	MAX RPM	ARBOR
GPM0420	4"	1.5mm	14,500	20mm, 5/8"
GPM4578	4-1/2"	1.5mm	13,200	7/8", 20mm
GPM0578	5"	1.5mm	12,200	7/8"
GPM06UN	6"	1.9mm	10,100	7/8", 5/8",
GPM07UN	7"	1.9mm	8,400	7/8", 5/8",
GPM08UN	8"	1.9mm	7,400	7/8", 5/8",
GPM0978	9"	2.2mm	6,600	7/8", 5/8"

ULTRACUT - ABM Series

EXCLUSIVELY FOR PNEUMATIC CUT-OFF TOOLS

The Alpha® Ultracut ABM Series is designed for use on most popular pneumatic cut-off tools which are widely used in automotive body shops and many other industrial manufacturing facilities. The Alpha® Ultracut doesn't change diameter during the cutting operation and provides maximum cutting depth throughout its life. The Alpha® Ultracut has bi-directional rotation so that you can use on reversible cut-off tools, which could be useful to direct sparks and debris away from the operator.



ABM Series

PART NO.	SIZE	THICKNESS	MAX RPM	ARBOR
ABM0338	3"	1.5mm	20,000	3/8" (10mm)
ABM0438	4"	1.5mm	18,000	3/8" (10mm)

FEATURES

Fits most popular Pneumatic Cut-off Tools

ULTRACUT - APR Series

HYBRID BLADE FOR INTRICATE AND FLUSH CUTTING APPLICATION

The Alpha® Ultracut APR Series combines the high-performance of the Alpha® Ultracut GPM Series with our unique design for flush cutting applications. Unlike other blades, the Ultracut APR Series blade accepts our exclusive Quad Drive Adapter, which eliminates the required lock nut, so it is perfect for "flush cutting" applications. For a quick and easy solution, use this blade to completely remove anchor bolts, concrete re-bar and pipe from floors and walls. This blade brings accuracy and precision flush cutting to the manufacturing facility or the jobsite.



APR Series

FEATURES

Fits most popular Grinders

PART NO.	SIZE	THICKNESS	MAX RPM	ARBOR
APR45QA	4-1/2"	1.7mm	13,200	20mm Quad Drive
APR05QA	5"	1.7mm	12,200	20mm Quad Drive
APR07QA	7"	1.9mm	8,400	20mm Quad Drive
BAH-5/8		Brass Adapter		5/8" Thread/Quad Drive
AAH-7/8		Aluminum Adapter		7/8" Thread/Quad Drive
AAH-20		Aluminum Adapter		20mm Thread/Quad Drive

RESCUE BLADE Fire / Rescue Equipment

PROVEN WINNER, CUTS IT ALL!

Alpha Professional Tools® does it again! Introducing the Alpha® Rescue Blade. This rugged demolition blade slices through concrete with re-bar, steel, stone, metal, wood, glass and rubberized material with ease. Proven to be a winner for firefighters, police officers, military personnel as well as construction professionals. Use with a gas-powered cut-off saw to get the job done quickly and effortlessly. Available in 9", 12", 14" and 16" diameters, the Alpha® Rescue Blade cuts it all!



RESCUE

FEATURES

Fits most popular Engine Cutters

PART NO.	SIZE	MAX RPM	ARBOR(S)
DR09A+	9"	8,300	22mm
DR12A+	12"	6,200	1", 7/8", 20mm
DR14A+	14"	5,360	1", 7/8", 20mm
DR16A+	16"	4,700	1", 7/8", 20mm

ANTIQUE BRUSH WHEELS

BRUSH WHEELS FOR THAT TEXTURED FINISH



Create a stylish textured finish to your work piece by using the new Alpha® Antique Brushes. Developed with TYNEX® A filament from DuPont, to ensure safety and exceptional performance, these brushes are available in 4" and 5" sizes. They utilize a snail lock adapter (SFAT-5/8, PVA-5/8) and can be used on the most popular edge polishing machines, hand-held sanders and polishers. Both sizes are available in grits of #60, #120, #240 and #320 and can be used on Metal as well as all Natural and Engineered Stones!

PART NO.	SIZE	MAX RPM	GRIT
AB4060	4"	Snail Lock	60
AB4120	4"	Snail Lock	120
AB4240	4"	Snail Lock	240
AB4320	4"	Snail Lock	320
PVA-5/8	4"	Adapter	—
AB5060	5"	Snail Lock	60
AB5120	5"	Snail Lock	120
AB5240	5"	Snail Lock	240
AB5320	5"	Snail Lock	320
SFAT-5/8	5"	Adapter	—
SFAT-M18	5"	Adapter	—



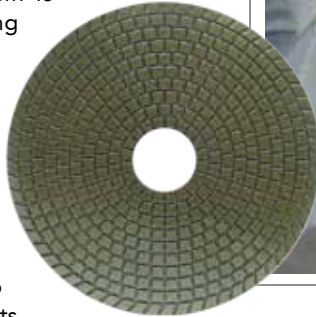
ANTIQUE BRUSH WHEEL

CERAMICA RESIN Disc

ONE STEP PROCESS FOR METAL SURFACE INSPECTION

Alpha® Ceramica Resin is the best hand polishing pad for the sheet metal inspection at the steel mills. You can attach Ceramica Resin on your preferred hand pad using the hook & loop backing and then hand polish a small section of the steel to find roll marks and dents.

The application is simple but is the back bone of a good quality control system for your steel fabrication.



CERAMICA RESIN

PART NO.	SIZE	MAX RPM	TYPE	GRIT / THREADS
GP50500R	5"	4,000	Hook & Loop	#500
GP55/8PD	5"	6,000	Flexible	5/8"-11
GP55/8RG	5"	6,000	Rigid	5/8"-11

PVA VP Polishing Disc

UNIQUE POLISHING SYSTEM FOR DIFFICULT METALS

Alpha® PVA VP polishing disc is a dry polishing system used to polish stainless steel for a semi-mirror finish. Fast working and long lasting, the Alpha® PVA VP polishing disc is easy to use and works well on most common high-speed angle grinders, sanders and polishers. It can be used for other applications such as stone, ceramic, wood and other metals. In addition, it works great for paint, rust and coating removal, as the material will not clog. The Alpha® PVA VP polishing disc is formulated with a silicon carbide abrasive and a polyvinyl alcohol bond that is color-coded for ease of operation. The discs are available with a straight 7/8" arbor or a 5/8"-11 disposable zinc hub for your convenience.



PVA VP

PART NO.	SIZE	MAX RPM	ARBOR	FINISH	GRIT
SPVA45W	4-1/2"	13,200	7/8"	Extra Coarse	40
SPVA45R	4-1/2"	13,200	7/8"	Coarse	80
SPVA45B	4-1/2"	13,200	7/8"	Medium	220
SPVA45G	4-1/2"	13,200	7/8"	Fine	400
SPVA45Y	4-1/2"	13,200	7/8"	Extra Fine	600
SPVA45WH	4-1/2"	13,200	5/8"-11	Extra Coarse	40
SPVA45RH	4-1/2"	13,200	5/8"-11	Coarse	80
SPVA45BH	4-1/2"	13,200	5/8"-11	Medium	220
SPVA45GH	4-1/2"	13,200	5/8"-11	Fine	400
SPVA45YH	4-1/2"	13,200	5/8"-11	Extra Fine	600

AIR-008 RUST INHIBITOR OIL

RUST INHIBITOR OIL FOR PNEUMATIC TOOLS

The Alpha® AIR-008 is a rust inhibitor oil is used to protect the tool from rusting when not in use. How it Works: At the end of each workday, place 2-3 drops of rust inhibitor oil (included with each Alpha® Pneumatic Tool) directly into the oil port of the pneumatic tool. After applying the rust inhibitor oil, turn the air valve slightly so that the oil lubricates, or “atomizes” the internal components of the tool in the form of a mist. If the process is executed correctly, you should see a mist coming out of the end of the tool. See the tool manual for step-by-step instructions for the specific tool.



PART NO.	ARBOR	DESCRIPTION
AIR-008	Pneumatic Tools	Rust Inhibitor Oil 8oz (237ml)

ALPHA® QUAD ADAPTER

FOR FLUSH CUTTING BLADES WITH 4 HOLES



QUAD ADAPTER
(Brass)



ALUMINUM ADAPTER

The Alpha® Quad Adapter is specifically designed for flush cutting blades with four mounting holes. Made of durable high quality brass, the Alpha® Quad Adapter is easily mounted to any quad drive blade and is available in 5/8"-11, M10-1.25 and M14-2 thread sizes for any flush cutting application. The adapter comes with all necessary parts and is ready for immediate use.

PART NO.	TYPE	THREAD
AAH-7/8	Aluminum Adapter	7/8" Thread/Quad Drive
AAH-20	Aluminum Adapter	20mm Thread/Quad Drive
BAH-5/8	Adapter	5/8"-11 Thread/Quad Drive
BAH-M10Q	Adapter	M10-1.25 Thread/Quad Drive
BAH-M14	Adapter	M14-2 Thread/Quad Drive

Product Literature

Catalogs

Alpha® has organized its product catalogs to best serve the needs of our customers. We offer a catalog for Hand Tooling applications and one for large Machine Tooling and Accessories. We also have a catalog specifically for the Concrete Industry.

All of our catalogs are portable and illustrate the tools and accessories needed for Cutting, Profiling, Grinding, Drilling and Polishing all types of materials.



Specialized Booklets

Alpha® has also created specialized booklets showcasing the tools needed to fabricate crystallized glass, thin-panels and pre-fabricated granite blanks. To request these catalogs, or for more information about our product line, visit our website at www.alpha-tools.com or contact us at 800-648-7229



Alpha® Tool Repair Service

- Authorized repair centers in the USA and Canada
- All tool repairs carry a 30-day warranty
- Quick turn-around time
- Technical support for repair and maintenance
- Order replacement tool parts directly from Alpha®
- Loaner program available



<i>Eastern USA</i>	<i>Western USA</i>
Alpha Professional Tools® 103 Bauer Drive Oakland, New Jersey 07436 Phone #: (800) 648-7229 ext. 240 E-mail: tooldesk@alpha-tools.com	A1 Industrial & eReplacementParts.com 7036 South High Tech Drive Midvale, UT 84047 Phone #: 801-285-7232 E-mail: dale@ereplacementparts.com

<i>Canada</i>
Edgewood Sales & Marketing Inc. 257 West Church Street Waterford, ON N0E 1Y0 Phone #: (519) 896-4992 ext. 101 Contact: Candace Hendershott E-mail: info@edgewoodsolutions.org



103 Bauer Drive • Oakland, NJ 07436
800-648-7229 • Fax: 800-286-0114

www.alpha-tools.com

Copyright © 2015 Alpha Professional Tools. All rights reserved.

Ver. 1.0 - 09/15

