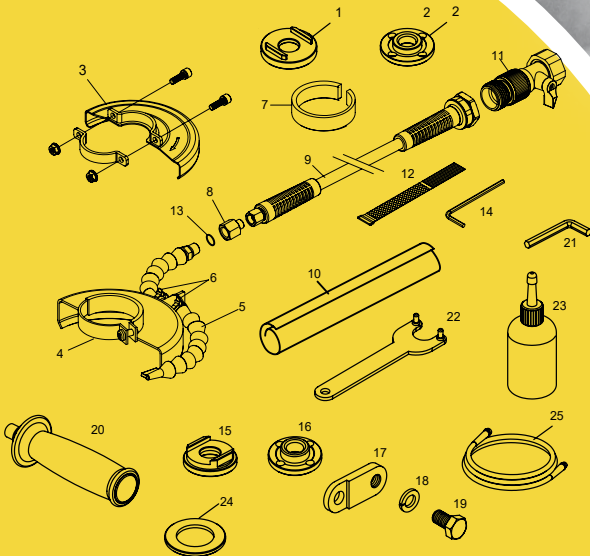


INDUSTRIAL QUALITY

ALPHA®



PSG-125 + Equipment included:



- | | |
|---|--|
| 1. Inner Flange for Grinding | 14. Hex. Wrench 6mm |
| 2. Locknut with 7/8" Arbor for Grinding | 15. Inner Flange for Cutting |
| 3. PSG-125 6" Safety Guard | 16. Locknut with 7/8" Arbor for Cutting |
| 4. WBC6KIT 6" Safety Guard | 17. Handle Bracket |
| 5. Loc-Line Assembly | 18. Spring Washer / M12 |
| 6. Plastic Tie | 19. Bolt / M12x16 |
| 7. Plastic Collar | 20. Side Handle |
| 8. Adapter (1/4 NPT >>> M10*P1.0) | 21. Hex. Wrench (7mm) |
| 9. Water Hose Assembly (15ft./4.5m) | 22. Pin Wrench |
| 10. Memory Wrap (3ft./1m) | 23. Rust Inhibitor Oil (8oz./237ml)
(AIR-008) |
| 11. Water Quick Coupler w/ Shut-Off Valve | 24. Height Adjustment Spacer |
| 12. Hook & Loop Strap (1-1/2" x 12") | 25. Air Hose Assembly (15ft./4.5m) |
| 13. Washer | |

Kit Part # 5480-1304

PSG-125 6" WET CUTTING KIT

FEATURES + BENEFITS

- Virtually dust-free cutting
- Powerful 1.4 HP motor with speed control governor
- Compact ergonomic aluminum body
- Reversible safety lever throttle
- Two auxiliary handle positions
- Adjustable rotating exhaust
- Built-in oil port for easy maintenance
- Kink-Free Water Hose for Easy Maneuverability and Reducing Operator Fatigue

MSRP
\$565.95

 **Alpha Professional Tools®**

16 Park Dr Ste 9, Franklin, NJ 07416 • 800-648-7229 • www.alpha-tools.com



Copyright © 2022 Alpha Professional Tools. All rights reserved.

FL2288-12/22