

Alpha[®] 5" Pneumatic Angle Grinder Parts List

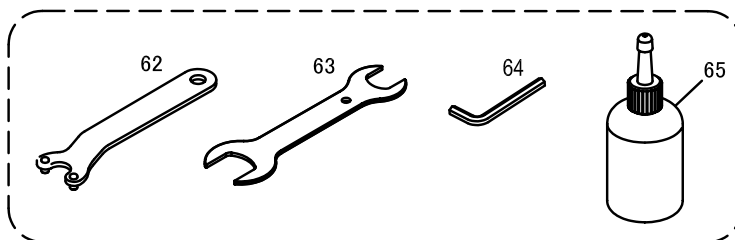
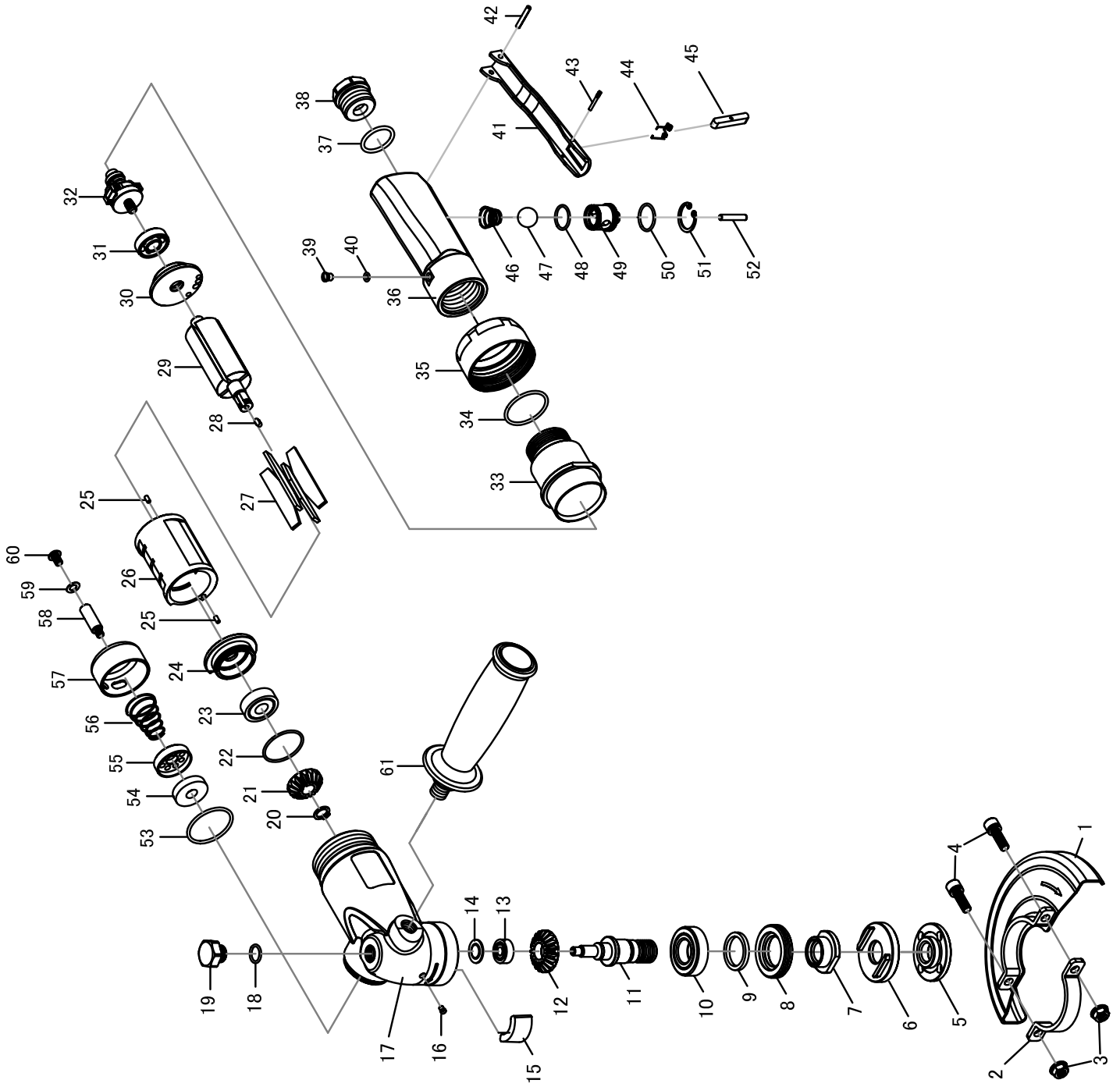


Part No: PSG-125
Version 1

 **Alpha Professional Tools**[®]

103 Bauer Drive, Oakland, NJ 07436 • 800-648-7229 • Fax: 800-286-0114
www.alpha-tools.com

ALPHA® PSG-125 5" PNEUMATIC ANGLE GRINDER SCHEMATIC



ALPHA® PSG-125 5" PNEUMATIC ANGLE GRINDER PARTS LIST

DRAWING NO.	PART NO.	DESCRIPTION	QTY	MSRP
1	3002-0001	5" Safety Guard	1	36.01
2	3002-0002	Retainer	1	9.42
3	3002-0003	Nut (M6)	2	0.42
4	3002-0004	Screw (M6x20)	2	0.63
5	3002-0005	Flange Nut (5/8"-11)	1	12.56
6	3002-0006	Flange	1	9.63
7	3002-0007	Spacer Nut	1	7.54
8	3002-0008	Lock Nut	1	13.82
9	3002-0009	Oil Felt	1	2.51
10	3002-0010	Ball Bearing (6003LLU)	1	11.73
11	3002-0011	Spindle (5/8"-11)	1	29.31
12	3002-0012	Bevel Gear	1	19.68
13	3002-0013	Ball Bearing (606ZZ)	1	10.05
14	3002-0014	Bearing Holder	1	1.26
15	3002-0015	Oil Felt	1	2.51
16	3002-0016	Lubricator	1	1.26
17	3002-0017	Housing	1	89.61
18	3002-0018	O-Ring (9.5x1.5)	1	0.63
19	3002-0019	Screw (M12x3T)	1	7.54
20	3002-0020	Retaining Ring (STW-9)	1	0.63
21	3002-0021	Bevel Pinion Gear	1	19.68
22	3002-0022	O-Ring (21.5X1.5)	1	0.63
23	3002-0023	Ball Bearing (6000LLU)	1	9.63
24	3002-0024	Front Bearing Case	1	28.06
25	3002-0025	Spring Pin (2.5x5)	2	0.63
26	3002-0026	Cylinder	1	56.11
27	3002-0027	Vane (4pc set)	1	19.80
28	3002-0028	Key (3X8L)	1	1.68
29	3002-0029	Rotor	1	50.25
30	3002-0030	Rear Bearing Case	1	23.45
31	3002-0031	Ball Bearing (609)	1	11.31
32	3002-0032	Governor Assembly	1	60.72
33	3002-0033	Inlet Guide	1	26.38
34	3002-0034	O-Ring (28.5x2)	1	0.63
35	3002-0035	Nut	1	22.19
36	3002-0036	Rear Body	1	66.16
37	3002-0037	O-Ring (19.8x2.4)	1	0.63
38	3002-0038	Air Inlet	1	7.54
39	3002-0039	Screw	1	1.26
40	3002-0040	O-Ring (3.5x1.5)	1	0.42
41	3002-0041	Throttle Lever	1	9.63

ALPHA® PSG-125 5" PNEUMATIC ANGLE GRINDER PARTS LIST

DRAWING NO.	PART NO.	DESCRIPTION	QTY	MSRP
42	3001-0072	Spring Pin (3x20L)	1	0.43
43	3002-0043	Pin	1	2.09
44	3001-0069	Spring	1	0.44
45	3001-0068	Safety Bar	1	2.73
46	3002-0046	Spring	1	0.63
47	3002-0047	Nylon Ball	1	7.12
48	3002-0048	O-Ring (13.5x1.5)	1	0.63
49	3002-0049	Bushing	1	11.31
50	3002-0050	O-Ring (15.5x1.5)	1	0.42
51	3002-0051	Retaining Ring (RTW-20)	1	0.63
52	3002-0052	Pin (4x22.8)	1	0.63
53	3002-0053	O-Ring (27x2)	1	0.63
54	3002-0054	Muffler	1	5.75
55	3002-0055	Exhaust Vent	1	11.73
56	3002-0056	Spring	1	1.26
57	3002-0057	Exhaust Cover	1	3.77
58	3002-0058	Spacer Screw	1	11.73
59	3002-0059	Washer (5.3x10x0.3)	1	0.63
60	3002-0060	Screw (M5x8L)	1	0.63
61	3001-0015	Side Handle Assembly	1	10.98
62	3002-0062	Pin Wrench (P:32mm)	1	11.73
63	3002-0063	Double Open End Wrench (32mm / 1")	1	10.05
64	3002-0064	Hex. Wrench (1/4")	1	0.84
65	AIR-008	Rust Inhibitor Oil (8oz / 237ml)	1	9.90